

Stellar® Service Crane

EC2000



EC2000★ TECHNICAL SPECIFICATION GUIDE



Our People. Our Products.

SPECIFICATION INFORMATION

Crane Rating: 6,500 ft-lbs (.99 ton-meters)
 Standard Boom Length: 4' (1.22 m) from CL of Crane

Boom Extension:
 • 1st stage: Manual 18" (45.72 cm)
 • 2nd stage: Manual 18" (45.72 cm)

Max. Horizontal Reach: 7' (2.13 m) from CL of Crane

Maximum Vertical Lift: 10' 9" (3.28 m)
 (from crane base)

Boom Elevation: 0° to +21° to +56°

Stowed Height: 60" (152.4 cm)
 (crane only)

Mounting Space Required: 12" x 12" (30.5 x 30.5 cm)

Shipping Weight: 275 lbs (124.74 kg)

Controls: Tethered remote

Winch

- Rope Length: 40' (12.19 m)
- Rope Diameter: 3/16" (.48 cm)

Rotation: 340 degree manual
 (Optional 314 degree power rotation is also available)

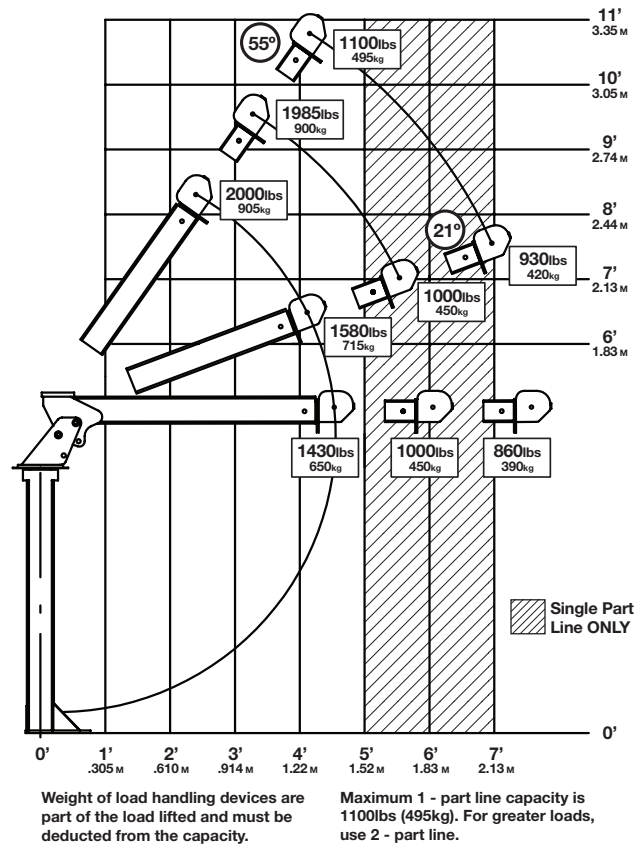
Lifting Capacities: 1580 lbs @ 4' (715 kg @ 1.219 m)
 930 lbs @ 7' (422 Kg @ 2.13 m)

Min. Rec. Chassis (GVRW) 8,600

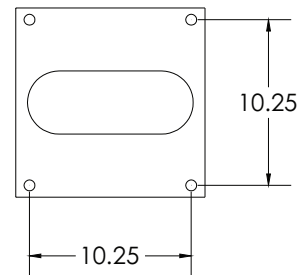
NOTE: All Stellar cranes meet ANSI B30.5 and OSHA 1910.180 specifications.
 Specifications subject to change without notification.

Your local distributor:

EC2000 CAPACITY CHART



HOLE MOUNTING DETAIL



Our People. Our Products.

190 State Street
 P.O. Box 169
 Garner, IA 50438
 Telephone: (641) 923-3741 • (800) 321-3741
 Fax: (641) 923-2812
 Internet: www.stellarindustries.com
 Email: sales@stellarindustries.com