



CRANE

MODEL 28000

280 W. 3rd St., Box 169 • Garner, IA 50438 • Phone: 641-923-3741 • Fax: 641-923-2812

TABLE OF CONTENTS
STELLAR CRANE 28,000

SPECIFICATION SHEET3

CAPACITY CHART4

CRANE OPERATION5

BASE ASSEMBLY6

OUTRIGGER ASSEMBLY.....7

MAST ASSEMBLY8

MAIN BOOM ASSEMBLY.....9

EXTENSION BOOM ASSEMBLY10

INSTALLATION KIT.....11

OIL TANK ASSEMBLY WITHOUT HEATER.....12

OIL TANK ASSEMBLY WITH HEATER13

CONTROL KIT RADIO CONTROL14

HYDRAULIC KIT.....15

DECAL KIT16

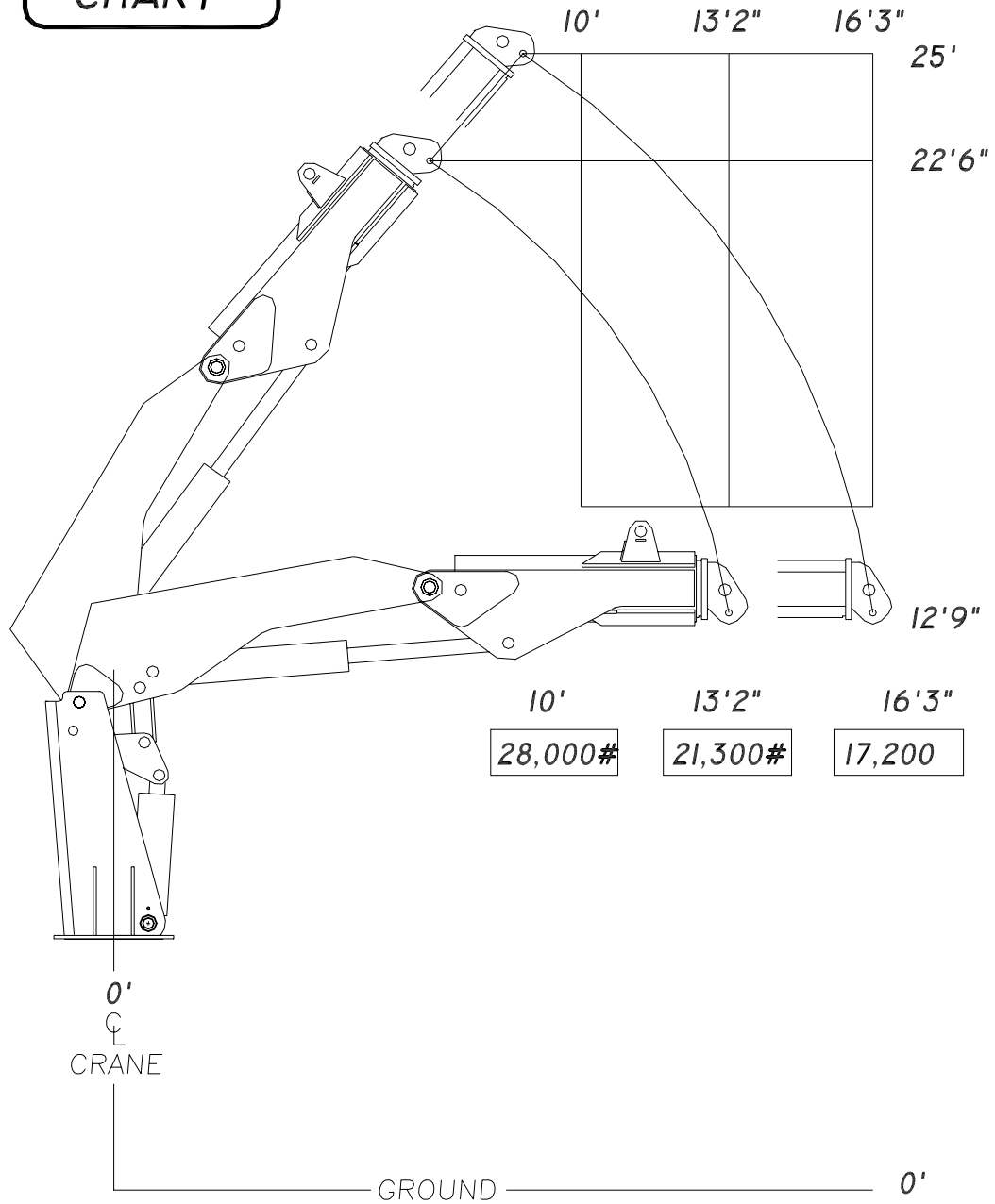
LIMITED WARRANTY STATEMENT.....17

SPECIFICATION SHEET

Crane Rating	280,000 foot/pounds
Standard Boom Length	13 foot 2 inches-from CL of Crane
Boom Extension	Hydraulic 37 inches
Maximum Horizontal Reach	16 foot 3 inches-from CL of Crane
Maximum Vertical Lift (from truck frame)	25 foot
Inner Lift Cylinder	9 inch bore with integral pilot operated counterbalance valves.
Outer Lift Cylinder	7 inch bore with integral pilot operated counterbalance valves.
Extension Cylinder	6 inch bore with integral pilot operated counterbalance valves.
Rotation	315 degree power (worm gear with pinion)
Lifting Capacities	28,000 pounds @ 10 foot 21,300 pounds @ 13 foot 2 inches 17,2000 pounds @ 16 foot 6 inches
Power Supply Required	PTO & Pump (20 gpm @ 4200 psi)
Controls	Fully proportional paddle controls for all functions
Stowed Height (Above truck frame)	114 inches
Mounting Space Required	48 inches
Approximate Shipping Weight	13,000 pounds

CAPACITY CHART

CAPACITY
CHART



STELLAR 28000

16055

CRANE OPERATION

CRANE OPERATION

THIS CRANE IS CONTROLLED BY AN ELECTRONICALLY OPERATED VALVE BANK. THE CONTROLLER FOR THIS VALVE IS SHOWN BELOW.

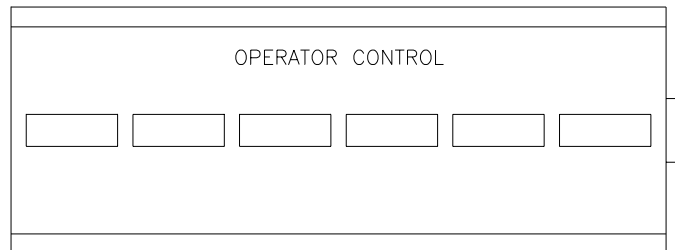
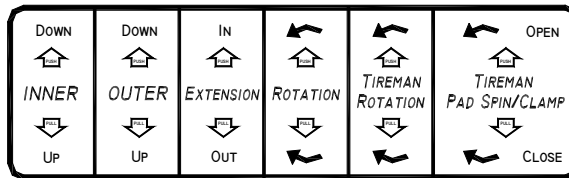
THE FUNCTIONS THAT IT CONTROLS ARE AS FOLLOWS:

- INNER BOOM UP & DOWN
- OUTER BOOM UP & DOWN
- EXTENSION BOOM IN & OUT
- ROTATION CW & CCW
- TIREMAN CLAMP
- TIREMAN ROTATION

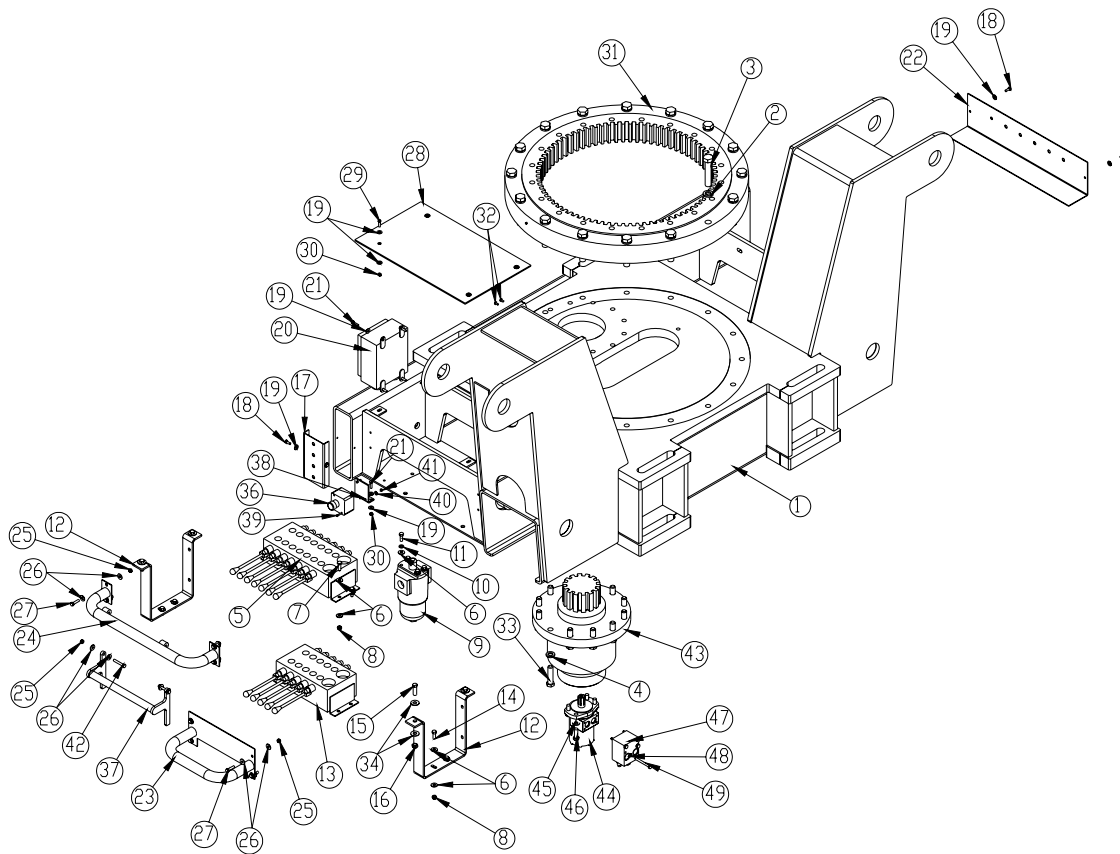
THIS IS A FULLY PROPORTIONAL HYDRAULIC SYSTEM.

TO OPERATE A FUNCTION, PUSH OR PULL THE PADDLE A DESIRED DISTANCE TO VARY THE SPEED.

NOTE: IN THE EVENT THAT CRANE HYDRAULICS WILL NOT OPERATE WITH THE HANDLE, USE THE MANUAL OVERRIDES LOCATED ON THE VALVE BANK



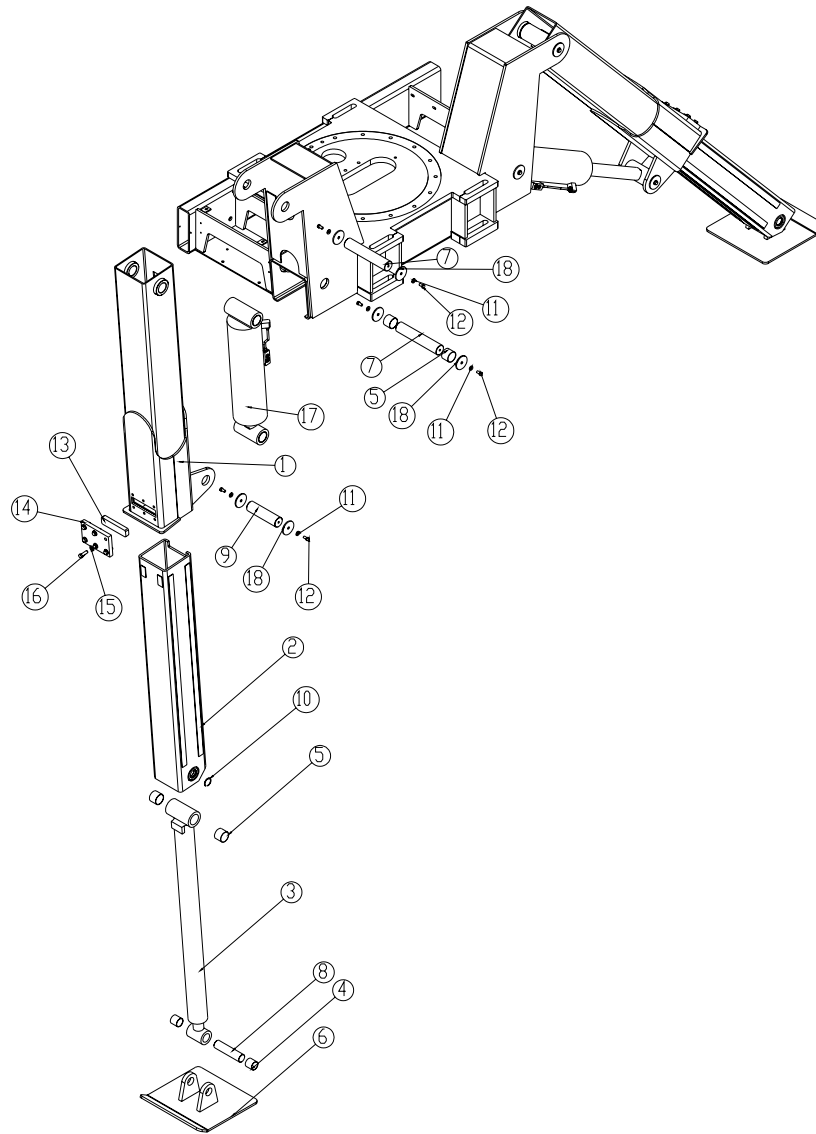
BASE ASSEMBLY P/N 18070



ITEM	PART	DESCRIPTION	QTY.	ITEM	PART	DESCRIPTION	QTY.
1	15596	BASE CRANE 28000	1	26	0343	WASHER 0.31 FLAT	20
2	18041	WASHER 0.88 SAE FLAT YELLOW GR9	16	27	0485	CAP SCR 0.31-18X1.25 HHGR5	8
3	17962	CAP SCR 0.88-9X4.50 HHGR9 ZY	16	28	16606	PLATE COVER 28000	1
4	C6219	WASHER 0.75 SAE FLAT YELLOW GR8	12	29	C6022	CAP SCR 0.25-20X1.00 BTNHD SS	4
5	9672	VB 7 SECT FPS TM12154	1	30	0333	NUT 0.25-20 HHGR5 NYLOC	6
6	0346	WASHER 0.38 FLAT	20	31	18471	TURNTABLE BEARING 23000	1
7	0335	CAP SCR 0.38-16X1.25 HHGR5	4	32	D1711	CAP SCR #10-24X0.50 BTNHD SS	2
8	0347	NUT 0.38-16 HH NYLOC	8	33	C1028	CAP SCR 0.75-10X3.00 HHGR8 ZY	12
9	9334	FILTER PRESSURE 15000 CRANE	1	34	0519	WASHER 0.44 USS FLAT ZINC	8
10	0523	WASHER 0.38 LOCK	4	35	8621	CLAMP HOSE/TUBE AG-3	2
11	11691	CAP SCR 0.38-24X1.00 HHGR8	4	36	22921	E-STOP PANIC BAR 28000	1
12	15599	BRACKET VB 28000	2	37	22917	BAR PANIC 28000	1
13	11455	VB 5 SECT FPS TM12154	1	38	22918	BRACKET E-STOP 28000	1
14	0351	CAP SCR 0.38-16X1.00 HHGR5	4	39	22183	CAP SCR #8-32X0.75 BTNHD SS	2
15	0359	CAP SCR 0.50-13X1.50 HHGR5	4	40	22185	WASHER 0.19 FLAT SS	2
16	C6106	NUT 0.50-13 HHGR5 NYLOC	4	41	22186	NUT #8-32 HH NYLOC SS	2
17	15407	PLATE SWITCH MTG 28000	1	42	0488	CAP SCR 0.31-18X2.00 HHGR5	2
18	0479	CAP SCR 0.25-20X0.75 HHGR5	4	43	22929	GEARBOX PLANETARY 28000	1
19	0340	WASHER 0.25 FLAT	22	44	22934	MOTOR HYD ROSS MG082511AAAB	1
20	13390	RECEIVER OMNEX RADIO	1	45	D0790	WASHER 0.50 FLAT GR8	4
21	0480	CAP SCR 0.25-20X1.00 HHGR5	6	46	10548	CAP SCR 0.50-13X1.50 HHGR8	4
22	11689	PLATE SWITCH MTG 23000 CRANE	1	47	22935	VALVE BLOCK CBCA-LAN-XTS	1
23	16498	GUARD VB 28000	1	48	5591	WASHER 0.31 SAE FLAT YELLOW GR8	4
24	16501	GUARD VB 28000	1	49	C0930	CAP SCR 0.31-18X3.00 HHGR5	4
25	0342	NUT 0.31-18 HH NYLOC	12				

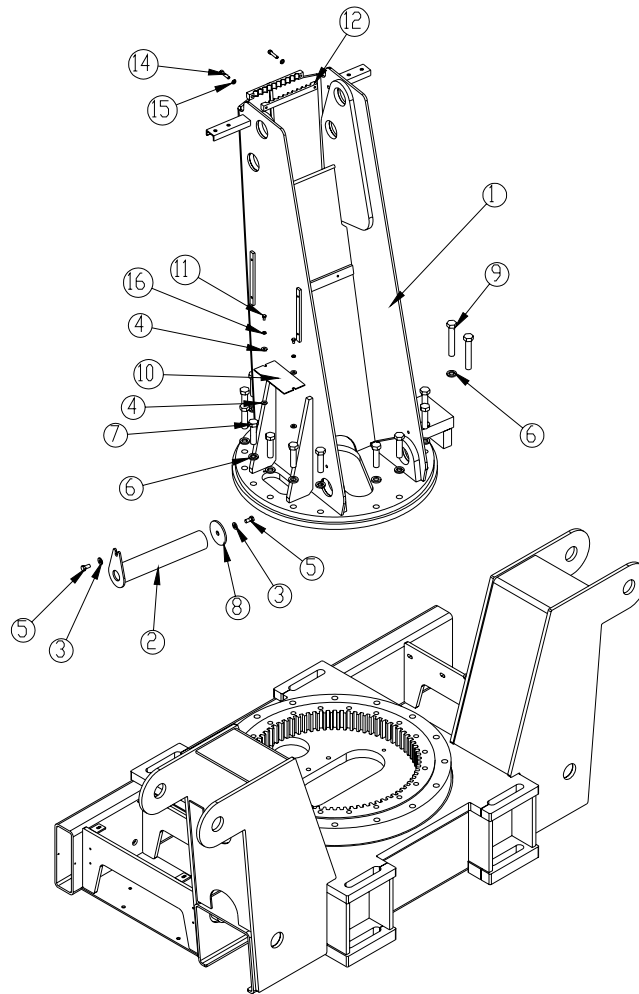
OUTRIGGER ASSEMBLY

P/N 18072



ITEM	PART	DESCRIPTION	QTY.	ITEM	PART	DESCRIPTION	QTY.
1	15504	OUTRIGGER 28000	2	12	10172	CAP SCR 0.50-13X1.00 HHGR8 ZY	12
2	15502	OUTRIGGER LEG 28000	2	13	10179	WEAR PAD OUTRIGGER 23000	2
3	9994	CYLINDER 4.00X50.00	2	14	10180	COVER WEAR PAD 23000	2
4	4381	BUSHING 32DXR32 2.00X2.00 GARLOCK	4	15	C5902	WASHER 0.63 FLAT GR8	12
5	0635	BUSHING 40DXR32 GARLOCK	8	16	C1025	CAP SCR 0.63-11X2.00 HHGR8 ZY	12
6	9969	OUTRIGGER PAD 23000	2	17	19031	CYLINDER ASM 9993	2
7	9995	PIN 2.50X13.38 D&T	4	18	8377	PIN CAP 0.56X3.50X.25	12
8	9997	PIN 2.00x8.25	2	19	8621	CLAMP HOSE/TUBE AG-3	2
9	9996	PIN 2.50X9.38 D&T	2	20	0340	WASHER 0.25 FLAT	2
10	2257	SNAP RING INSIDE 2.00	4	21	0342	NUT 0.31-18 HH NYLOC	2
11	D0790	WASHER 0.50 FLAT GR8	12				

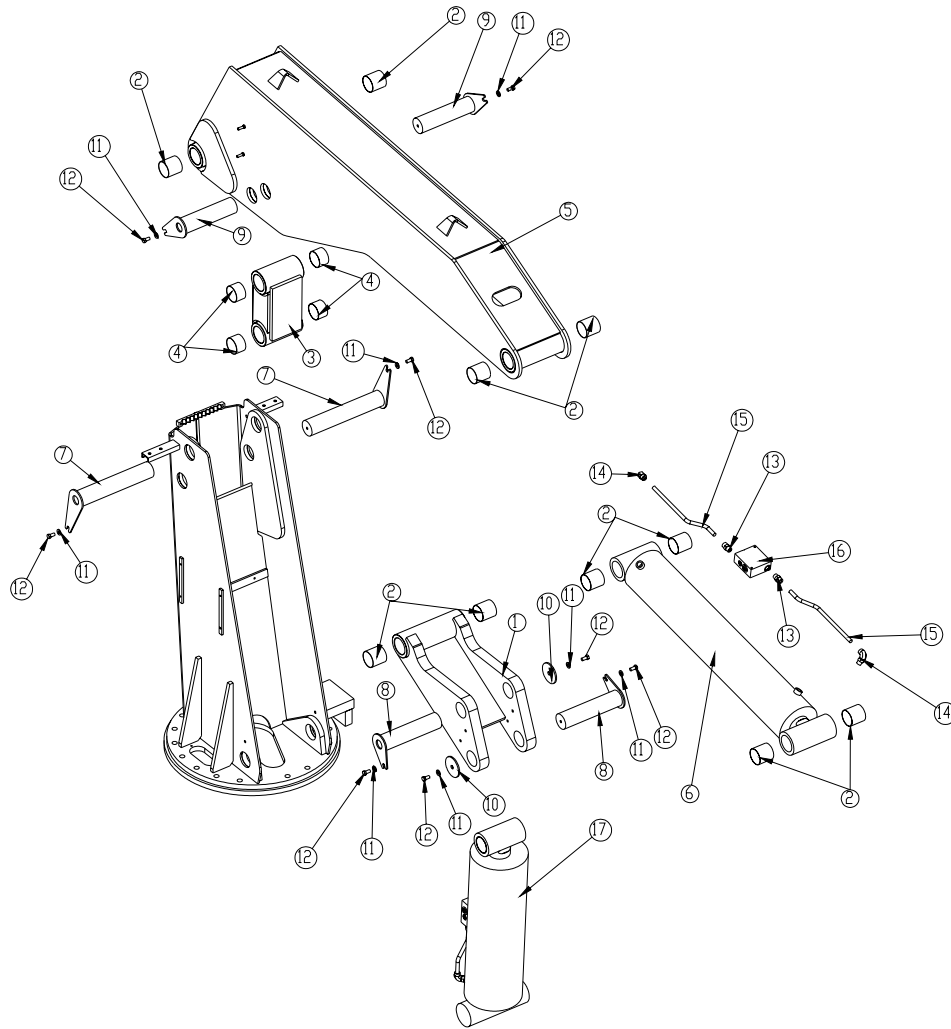
MAST ASSEMBLY P/N 18073



ITEM	PART	DESCRIPTION	QTY.
1	15403	MAST 28000	1
2	15755	TEAR DROP PIN 3.00X16.13	1
3	D0790	WASHER 0.50 FLAT GR8	2
4	0343	WASHER 0.31 FLAT	4
5	10172	CAP SCR 0.50-13X1.00 HHGR8 ZY	2
6	18041	WASHER 0.88 SAE FLAT YELLOW GR9	18
7	17963	CAP SCR 0.88-9X3.50 HHGR9 ZY	16
8	8597	PIN CAP 0.69x4.00x0.25 SS	1
9	17964	CAP SCR 0.88-9X5.50 HHGR8	2
10	11297	PLATE INSPECTION MAST 23000	1
11	0484	CAP SCR 0.31-18 X 0.50 HHGR5	2
12	17133	HOSE CLAMP 28000	1
14	11882	CAP SCR 0.38-16X1.75 SH ZC	2
15	0523	WASHER 0.38 LOCK	2
16	0522	WASHER 0.31 LOCK	2

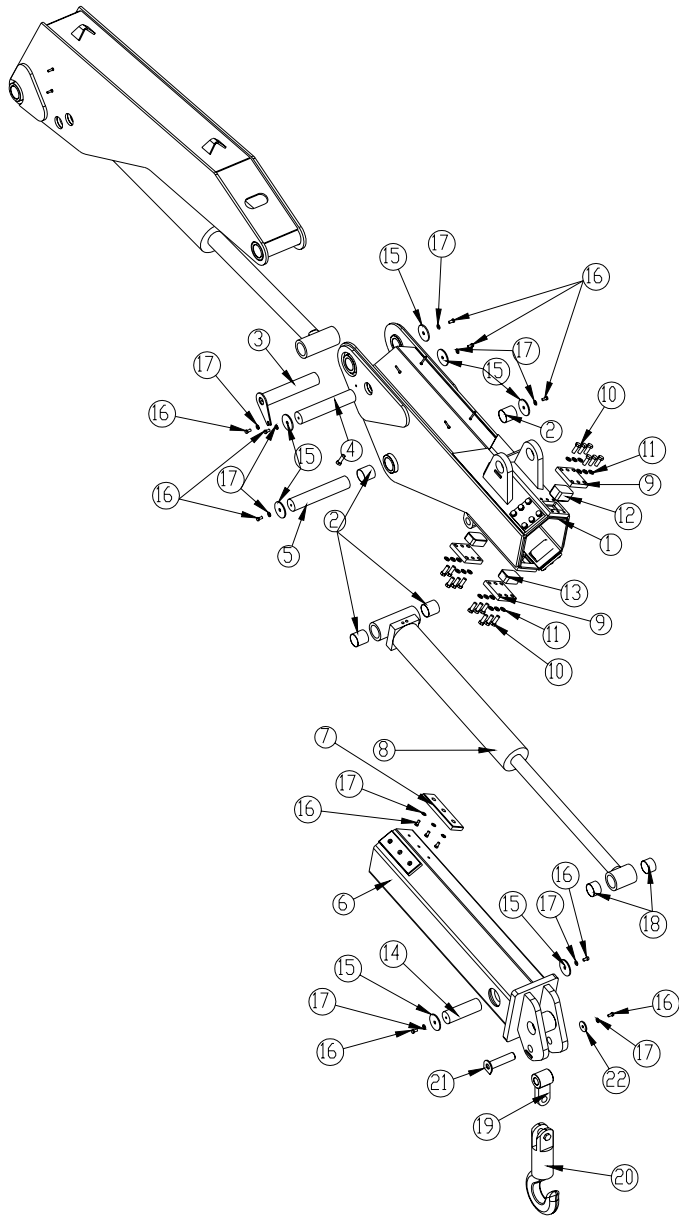
MAIN BOOM ASSEMBLY

P/N 18074



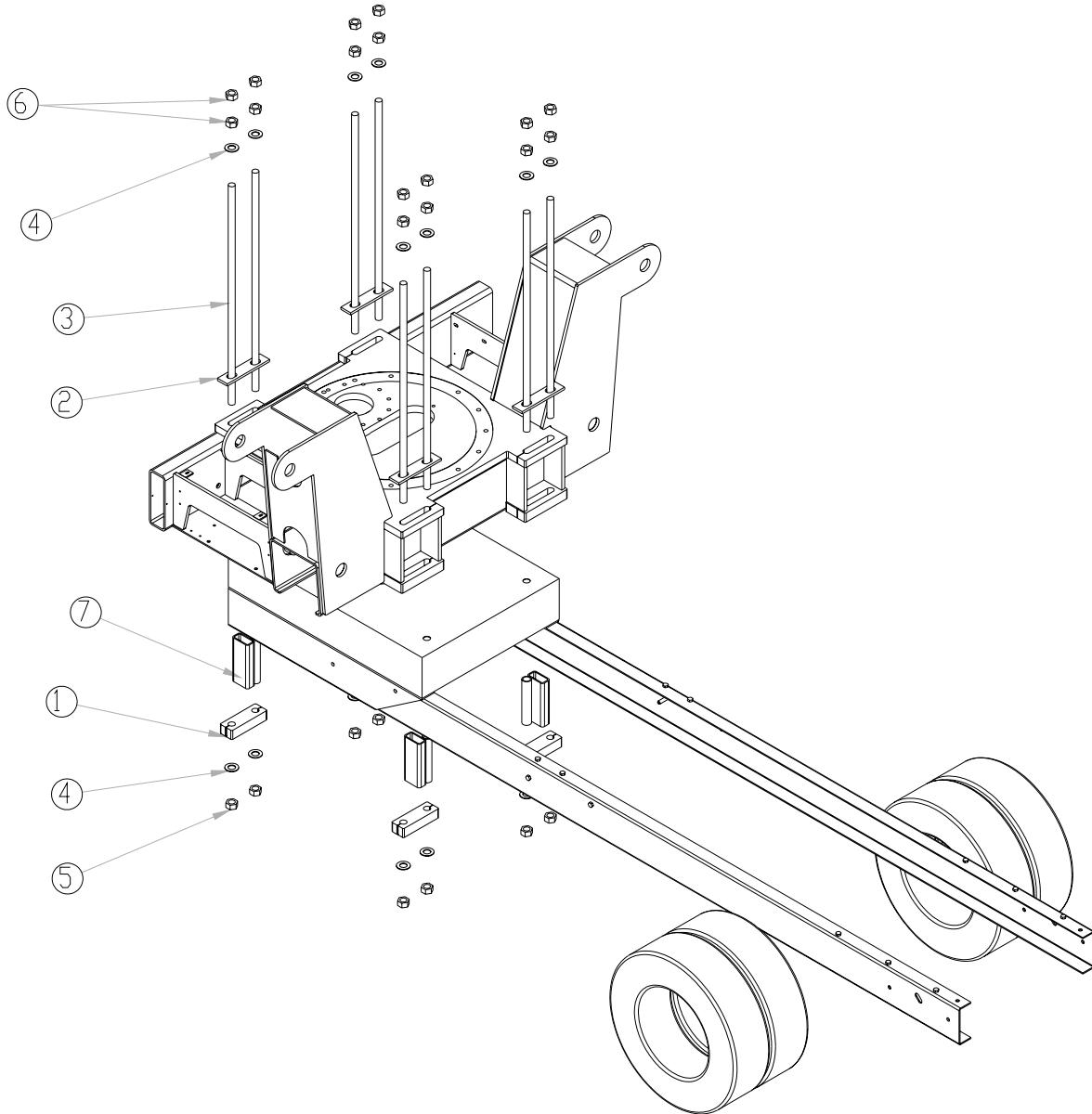
ITEM	PART	DESCRIPTION	QTY.
1	15495	LINK MAIN 28000	1
2	2227	BUSHING 48DXR48 GARLOCK	10
3	15497	LINK WLDMT 28000 MAIN	1
4	0865	BUSHING 48DXR32 GARLOCK	4
5	15398	INNER BOOM 28000	1
6	15604	CYLINDER 7.00X38.25	1
7	15758	TEAR DROP PIN 3.00X16.13	2
8	15763	TEAR DROP PIN 3.00X12.63	2
9	15760	TEAR DROP PIN 3.00X11.63	2
10	8597	PIN CAP 0.69x4.00x0.25 SS	2
11	D0790	WASHER 0.50 FLAT GR8	8
12	10172	CAP SCR 0.50-13X1.00 HHGR8 ZY	8
13	16152	FTG ADAPT 10-F50LD-S	2
14	16153	FTG ADAPT 10-C50LD-S	2
15	16158	TUBE ASM 0.63X16.09	2
16	15995	MANIFOLD ASM DUAL T2A 5000PSI	1
17	20694	CYLINDER ASM 28000 MAST	1
18	0523	WASHER 0.38 LOCK	2

EXTENSION BOOM ASSEMBLY P/N 18075



ITEM	PART	DESCRIPTION	QTY.	ITEM	PART	DESCRIPTION	QTY.
1	15393	OUTER BOOM 28000	1	12	15778	WEAR PAD 3.00X5.00X2.44	2
2	2227	BUSHING 48DXR48 GARLOCK	4	13	15779	WEAR PAD 3.00X5.00X1.75	4
3	15765	TEAR DROP PIN 3.00X15.38	1	14	15769	PIN 3.00X9.13 D&T	1
4	15766	PIN 3.00X15.38 D&T	1	15	8597	PIN CAP 0.69x4.00x0.25 SS	7
5	15768	PIN 3.00X15.88 D&T	1	16	10172	CAP SCR 0.50-13X1.00 HHGR8 ZY	15
6	15388	EXT BOOM 28000	1	17	D0790	WASHER 0.50 FLAT GR8	15
7	15601	WEAR PAD 1.00X4.00X12.00	2	18	0865	BUSHING 48DXR32 GARLOCK	2
8	15608	CYLINDER 6.00X37.00	1	19	16054	SWIVEL LINK 28000 CRANE	1
9	15609	PLATE WEAR PAD COVER 28000	6	20	16052	HOOK 15 TON SWIVEL 297814	1
10	4543	CAP SCR 0.75-10X2.00 HHGR8 ZY	36	21	16028	PIN TEAR DROP 1.75X7.06	1
11	C6219	WASHER 0.75 SAE FLAT YELLOW GR8	36	22	9142	PIN CAP 0.56X2.50X.25	1

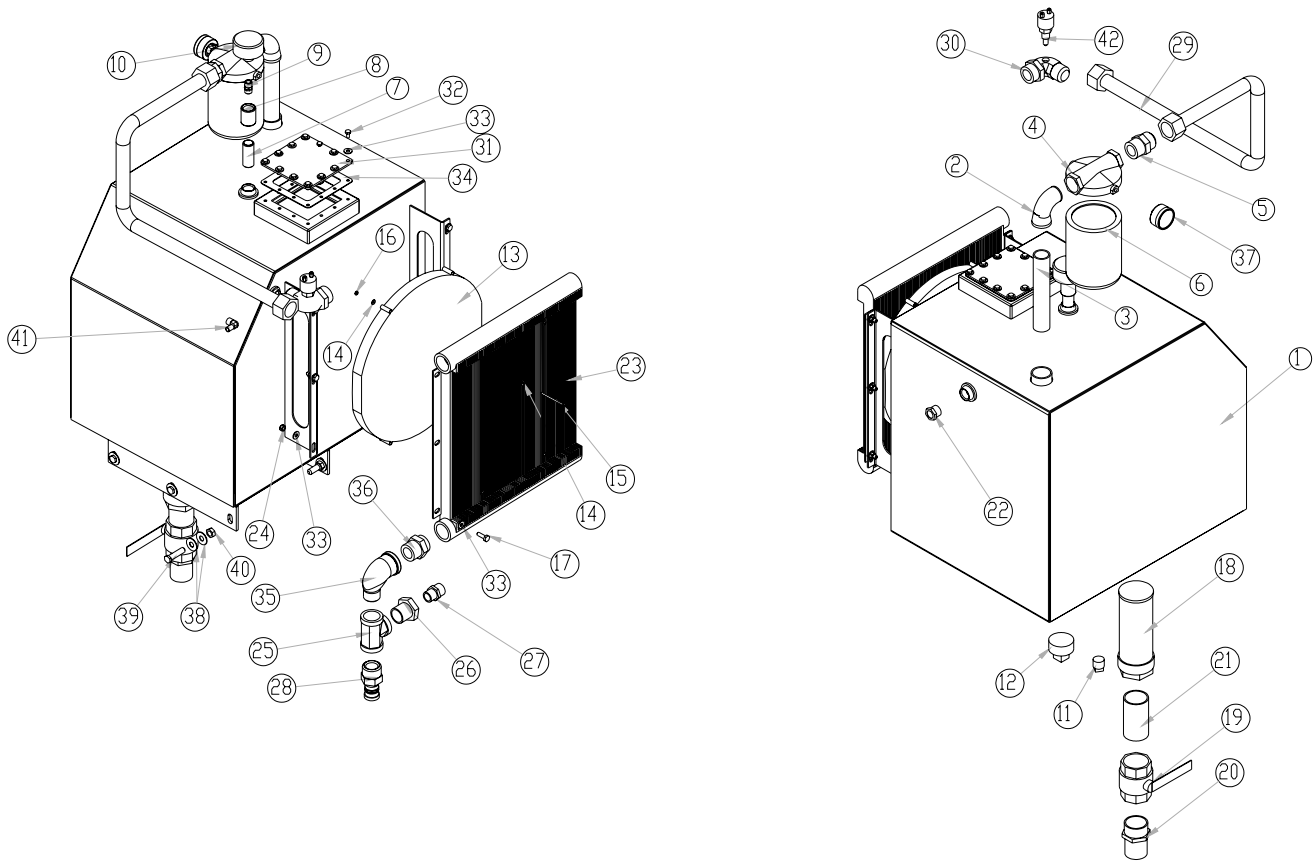
INSTALLATION KIT P/N 16659



ITEM	PART	DESCRIPTION	QTY.	ITEM	PART	DESCRIPTION	QTY.
1	8054	MTG BLOCK 15000	4	5	8834	NUT 1.25-7 HHGR8 TOP LOCKING	8
2	11677	PLATE MOUNTING 23000	4	6	8978	NUT 1.25-7 HHGR8	16
3	14498	TIE DOWN ROD	8	7	8202	FRAME SUPPORT 15000 CRANE	4
4	9180	WASHER 1.25 SAE FLAT YELLOW GR8	16				

OIL TANK ASSEMBLY WITHOUT HEATER

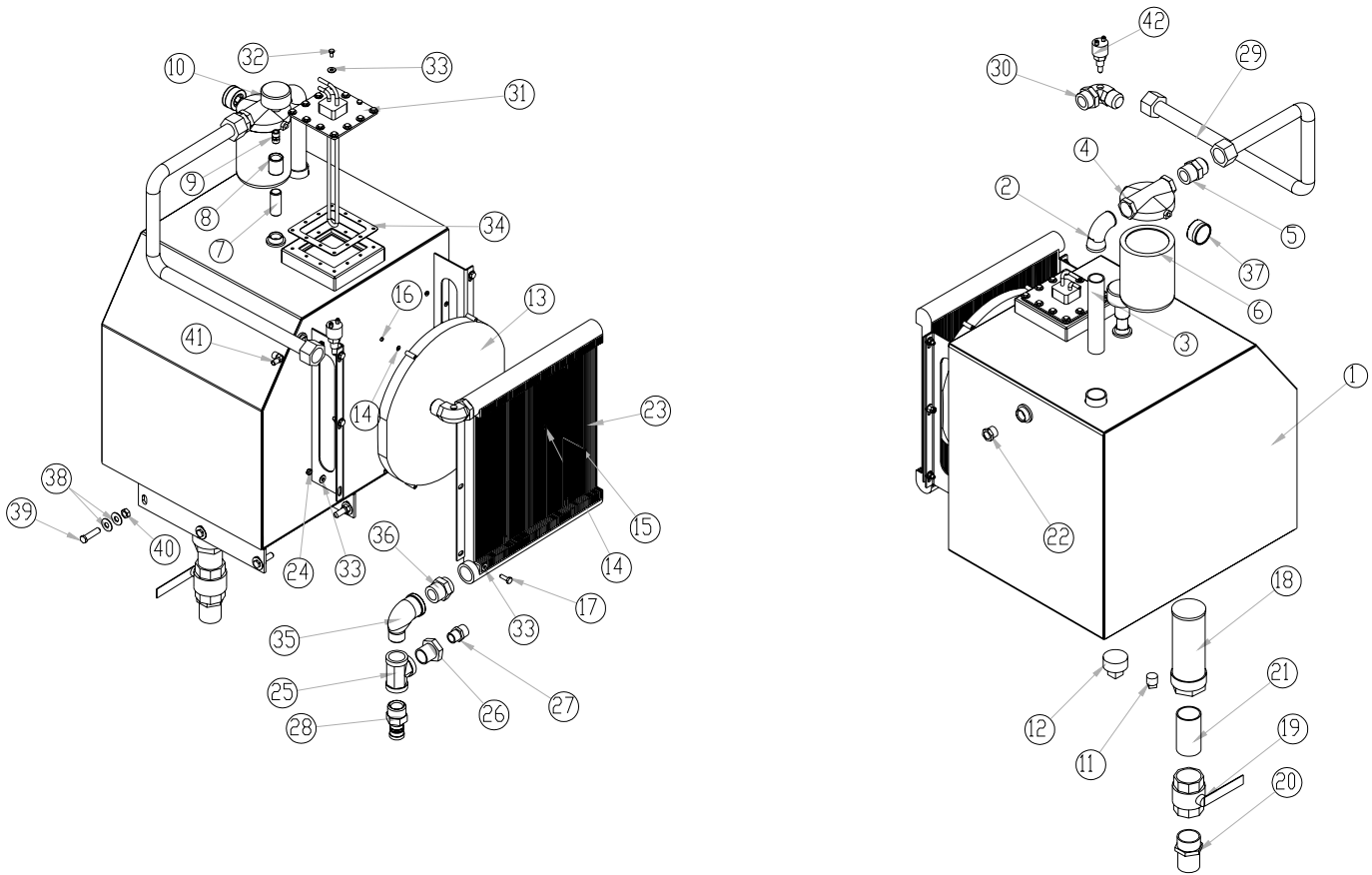
P/N 14296



ITEM	PART	DESCRIPTION	QTY.	ITEM	PART	DESCRIPTION	QTY.
1	10014	OIL TANK 45GAL	1	22	C4955	SIGHT GAUGE 3/4 NPT EYE	1
2	C4694	ST EL 1.25 90 DEG BLK	1	23	8240	COOLER OIL BLISSFIELD #65155SPECIAL	1
3	C4745	NIPPLE 1.25X8.00 BLK PIPE	1	24	0342	NUT 0.31-18 HH NYLOC	6
4	C6228	FILTER HEAD SF120-25 1.3	1	25	C6170	TEE 1.25 STL	1
5	10098	FTG MJIC/MNPT 20-FTX	1	26	C2375	FTG REDU 0102-20-12	1
6	C6225	FILTER LARGE SE-10	1	27	C4952	FTG ADAPT 12 FLO-S	1
7	C1053	NIPPLE 0.75X2.50 BLK PIPE	1	28	C2282	FTG 1.25 NPT TO 1.25 BARB	1
8	C5930	COUPLER 0.75 BLK	1	29	10964	TUBE ASM 1.25 CLR TO RSRVR 15000	1
9	C4282	MUFFLER LOAD GENE	1	30	24910	FTG MJIC/MSTR 90 20-C5OX MOD	1
10	C2151	CAP FILLER BREATHER	1	31	11442	PLATE COVER TANK HEATER FLANGE	1
11	C2126	MAGNETIC PLUG DRAIN 3/4"	1	32	0478	CAP SCR 0.25-20X0.50 HHGR5	12
12	C4847	PLUG 2.00 NPT SQ HD BLK	1	33	0340	WASHER 0.25 FLAT	24
13	8241	FAN 16.00" PUSH 12 VOLT	1	34	11149	GASKET ARCTIC FOX HEATER #A-611	1
14	5290	WASHER #8 SAE FLAT ZP	8	35	c6152	ST EL 1.25 90 DEG BLK	1
15	D0075	SCREW #6-32X2.75 RH HD MACHINE	4	36	10957	FTG MJIC/MNPT 20-FTX	1
16	D0076	NUT #6-32 HH NYLOC	4	37	16145	GAUGE PRES FILTER SERVICE CI20	1
17	C0922	CAP SCR 0.31-18X1.00 HHGR5	6	38	0519	WASHER 0.44 USS FLAT ZINC	12
18	C6327	FILTER STRAINER 35GAL TF-2030	1	39	0501	CAP SCR 0.50-13X2.00 HHGR5	6
19	C4750	VALVE BALL 2.00	1	40	C6106	NUT 0.50-13 HHGR5 NYLOC	6
20	C4730	FTG HOSE BARB 2.00	1	41	D1263	FTG HOSE BARB 0.38 HOSE X 0.38 90DG	1
21	D0653	NIPPLE 2.00X4.00 BLK	1	42	D1862	SWITCH TEMP HT-2A-100R-.38NPT 25A	1

OIL TANK ASSEMBLY WITH HEATER

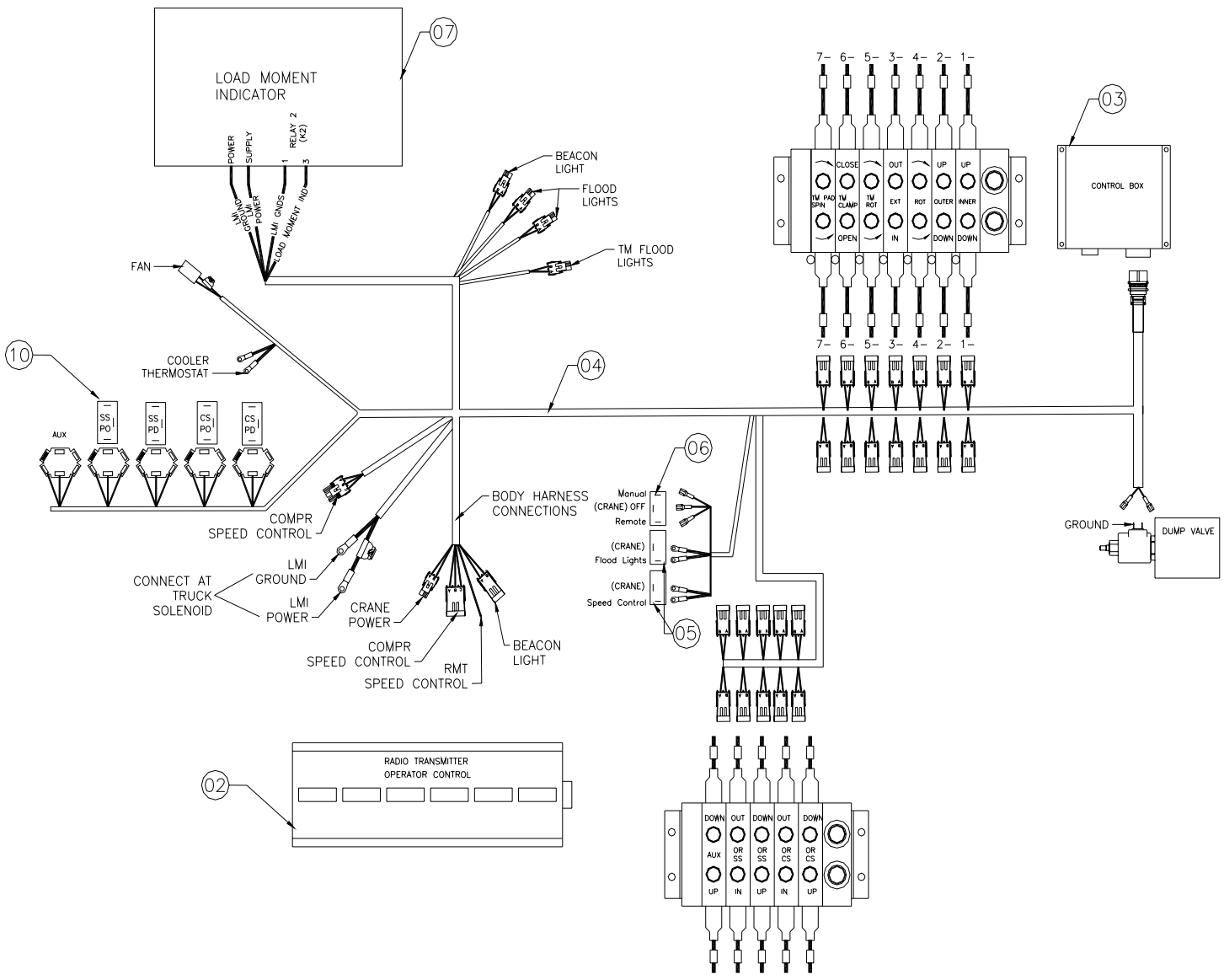
P/N 14297



PART	DESCRIPTION	QTY.	PART	DESCRIPTION	QTY.
1	10014 OIL TANK 45GAL	1	22	C4955 SIGHT GAUGE 3/4 NPT EYE	1
2	C4694 ST EL 1.25 90 DEG BLK	1	23	8240 COOLER OIL BLISSFIELD #65155SPECIAL	1
3	C4745 NIPPLE 1.25X8.00 BLK PIPE	1	24	0342 NUT 0.31-18 HH NYLOC	6
4	C6228 FILTER HEAD SF120-25 1.3	1	25	C6170 TEE 1.25 STL	1
5	10098 FTG MJIC/MNPT 20-FTX	1	26	C2375 FTG REDU 0102-20-12	1
6	C6225 FILTER LARGE SE-10	1	27	C4952 FTG ADAPT 12 FLO-S	1
7	C1053 NIPPLE 0.75X2.50 BLK PIPE	1	28	C2282 FTG 1.25 NPT TO 1.25 BARB	1
8	C5930 COUPLER 0.75 BLK	1	29	10964 TUBE ASM 1.25 CLR TO RSRVR 15000	1
9	C4282 MUFFLER LOAD GENE	1	30	24910 FTG MJIC/MSTR 90 20-C5OX MOD	1
10	C2151 CAP FILLER BREATHER	1	31	11147 HEATER TANK ARCTIC FOX #F-203-29	1
11	C2126 MAGNETIC PLUG DRAIN 3/4"	1	32	0478 CAP SCR 0.25-20X0.50 HHGR5	12
12	C4847 PLUG 2.00 NPT SQ HD BLK	1	33	0340 WASHER 0.25 FLAT	24
13	8241 FAN 16.00" PUSH 12 VOLT	1	34	11149 GASKET ARCTIC FOX HEATER #A-611	1
14	5290 WASHER #8 SAE FLAT ZP	8	35	c6152 ST EL 1.25 90 DEG BLK	1
15	D0075 SCREW #6-32X2.75 RH HD MACHINE	4	36	10957 FTG MJIC/MNPT 20-FTX	1
16	D0076 NUT #6-32 HH NYLOC	4	37	16145 GAUGE PRES FILTER SERVICE CI20	1
17	C0922 CAP SCR 0.31-18X1.00 HHGR5	6	38	0519 WASHER 0.44 USS FLAT ZINC	12
18	C6327 FILTER STRAINER 35GAL TF-2030	1	39	0501 CAP SCR 0.50-13X2.00 HHGR5	6
19	C4750 VALVE BALL 2.00	1	40	C6106 NUT 0.50-13 HHGR5 NYLOC	6
20	C4730 FTG HOSE BARB 2.00	1	41	D1263 FTG HOSE BARB 0.38 HOSE X 0.38 90DG	1
21	D0653 NIPPLE 2.00X4.00 BLK	1	42	D1862 SWITCH TEMP HT-2A-100R-.38NPT 25A	1

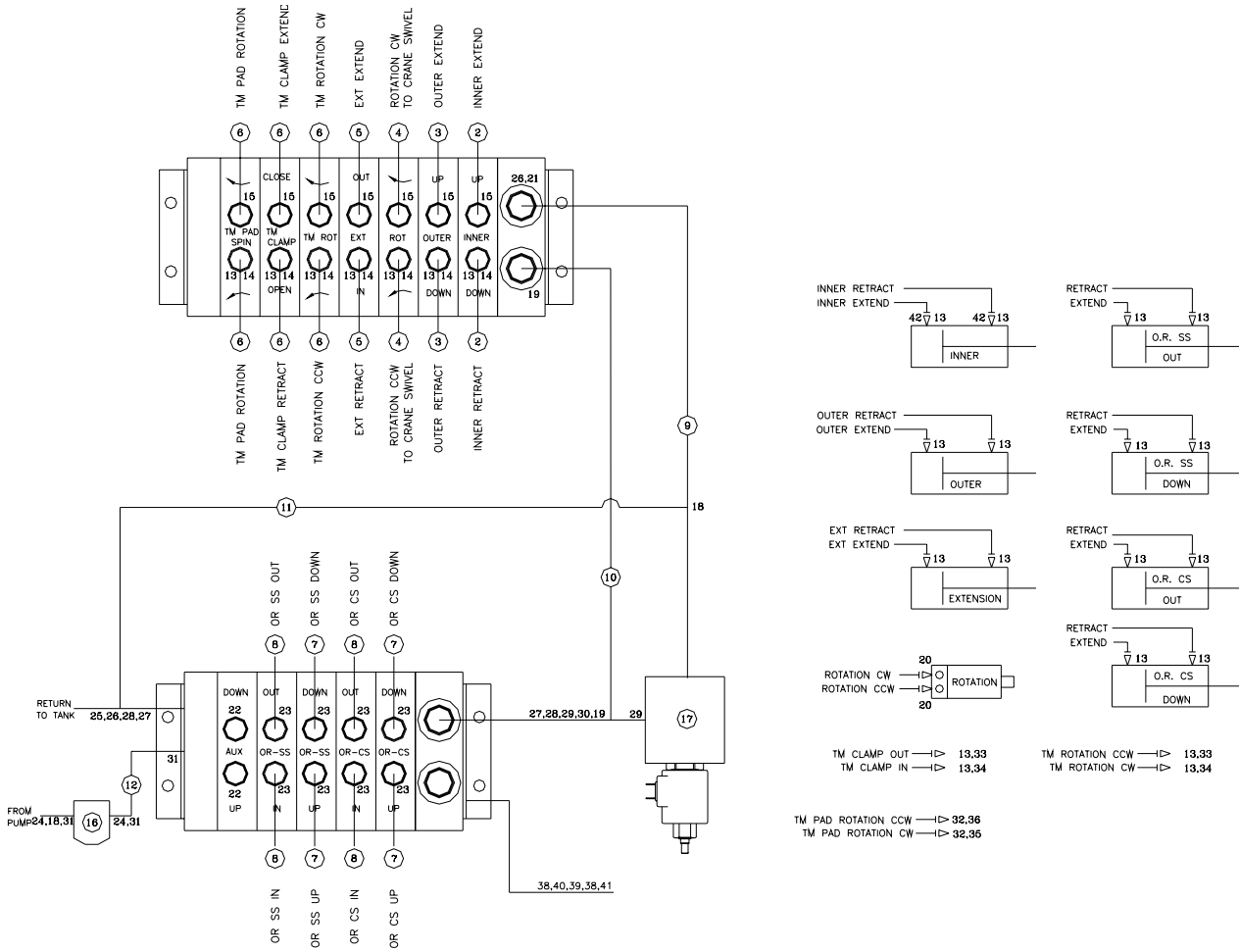
CONTROL KIT RADIO CONTROL

P/N 16505



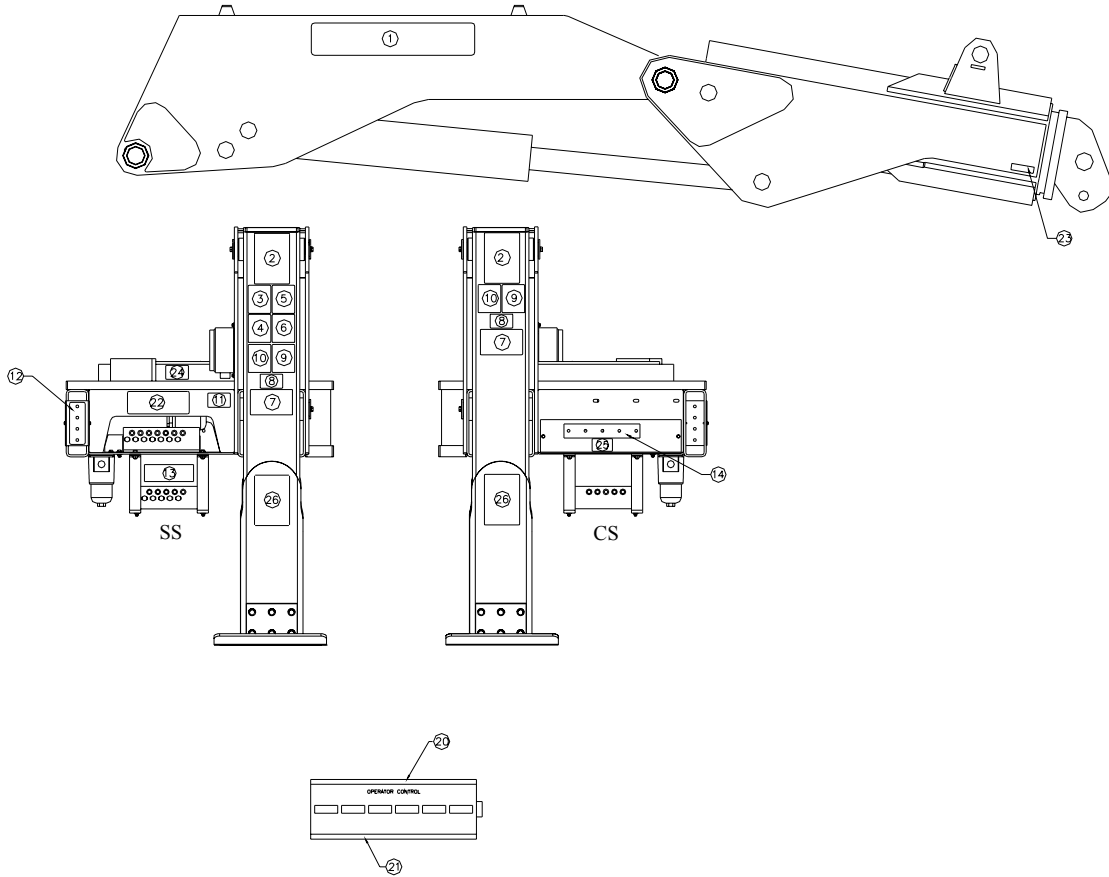
ITEM	PART	DESCRIPTION	QTY.	ITEM	PART	DESCRIPTION	QTY.
1	9673	CONTROLLER ASSEMBLY (ITEMS 2-3)	1	6	8623	SWITCH TOGGLE ON-OFF-ON SGL P DBL T	1
2	13976	HANDLE ASSEMBLY	1ref	7	18285	LOAD MOMENT INDICATOR SYSTEM	1
3	13390	CONTROL BOX	1ref	8	11292	BATTERY CHARGER AUTOMOTIVE	1
4	19803	WIRE HARNESS 28000 CRANE	1	9	11291	BATTERY 9.6 V	2
5	C4815	SWITCH TOGGLE ON/OFF	2	10	6394	SWITCH TOGGLE MOM/ON/OFF/ON	4

HYDRAULIC KIT P/N 15775



ITEM	PART No.	DESCRIPTION	QTY	ITEM	PART No.	DESCRIPTION	QTY
1	15767	HOSE KIT,28000 CRANE (incl:2-12)	1	22	D1535	PLUG STR HOLLOW HEX 0.50 8-HP50N	2
2	14872	HOSE-HYD 0.38 X 72	1	23	7343	FTG O'RING FS 45 DEG 6-8 V5OLO	2
3	16661	HOSE-HYD 0.38 X 180	1	24	D1311	FTG ADAPT MSTR/FSTR 20-12F50GS	1
4	16662	HOSE-HYD 0.38 X 42	2	25	D0525	FTG TEE O'RING F SL 12 R6LO-S	1
5	15729	HOSE-HYD 0.38 X 240	1	26	C2142	FTG ADAPT 12-F5OLO-S	1
6	16663	HOSE-HYD 0.38 X 288	1	27	10973	FTG ADAPT MSTR/FSTR 6410-12-12	7
7	11674	HOSE-HYD 0.38 X 102	1	28	10095	FTG MSTR/FSTR 12-12 AOEG5	7
8	16493	HOSE-HYD 0.38X 84	2	29	C5549	FTG MSTR/MSTR 12-12 UNION 12F50HAO	25
9	16030	HOSE-HYD 0.75X 11.00	2	30	15776	FTG TEE ST TH BRANCH 12-G5G5JAO-S	1ref
10	16492	HOSE-HYD 0.50 X 12.00	2	31	C1180	FTG ADAPT 8-12 F5OLO-S	1ref
11	16051	HOSE-HYD 0.75X 13.50	3	32	0279	FTG ADAPT 6-F5OLO-S	1ref
12	16029	HOSE-HYD 0.50X 8.50	1	33	13557	QUICK COUPLER 2FFN38-12SAE-M	1ref
13	C1854	FTG ADAPT 6-8 F5OLO-S	1	34	13556	QUICK COUPLER 2FFN38-12SAE-F	4ref
14	C2248	FTG ADAPT 6 C6LO-S	2	35	13554	QUICK COUPLER 2FFI14-38SAE-F	4ref
15	C5547	FTG ADAPT 6-8 C5OLO-S	2	36	13555	QUICK COUPLER 2FFI14-38SAE-M	6ref
16	9334	HIGH PRESSURE FILTER	2	37	9766	FTG ADAPT MSTR/FNPT 12 - 0.25	2ref
17	9333	SOLENOID VALVE	1	38	0553	ST EL 2102-6-6	2ref
18	7349	FTG ADAPT MSTR/FSTR 20-12F50GS	2	39	C0557	UNION 1/4 GG STEEL	2ref
19	C4227	FTG MF/MSTR 90 8-12 C5OLO-S	8	40	C5576	FTG 0.25 HEX NIPPLE	2ref
20	C1855	FTG ADAPT 6-10 F5OLO-S	2	41	6397	GAUGE OIL LF 2.5 0-5000 CBM	1
21	C4903	FTG SL LOK SWIVEL 12-C6LO-S	1	42	20431	FTG 90 MSTR/FBSP 6-1/4	2

DECAL KIT



ITEM NO.	PART NO.	DESCRIPTION	QTY.	ITEM NO.	PART NO.	DESCRIPTION	QTY.
1	16336	DECAL IDENTIFICATION 28000	2	14	16619	DECAL SWITCH PANEL 28000	1
2	16055	DECAL CAPACITY 28000	2	15	C4545	DECAL DANGER ELECTROCUTION	4
3	C4540	DECAL DANGER	1	16	8998	DECAL AIR DRAIN	1
4	4189	DECAL DANGER OPERATION RESTRICTION	1	17	8843	DECAL EXPLODING TANK	1
5	C4544	DECAL CAUTION	1	18	C5911	DECAL STELLAR LOGO 2.00X4.50	2
6	4190	DECAL DANGER OPERATION CONDITION	1	19	C5910	DECAL STELLAR LOGO 4.00X9.50	1
7	C1179	DECAL DANGER ELECTROCUTION HORTL	2	20	16657	DECAL CONTROL HANDLE 28000	1
8	C5918	DECAL CAUTION STAND CLEAR	2	21	15172	DECAL ASME/ANSI B30.22/B30.5	1
9	C4541	DECAL WARNING	2	22	16470	DECAL VB CONTROL 28000	1
10	C4795	DECAL DANGER FOOT	2	23	16973	DECAL USE STELLAR APPROVED ATTACHMT	2
11	4214	DECAL CONTACT STELLAR	1	24	22618	DECAL GREASE WEEKLY	1
12	16620	DECAL SWITCH PLATE 28000	1	25	22619	DECAL CHECK GEARBOX	1
13	16618	DECAL OUTRIGGERS 28000	1	26	16732	DECAL TIRE MAN OVERLOAD POSITION	2

Limited Warranty Statement

**for Stellar Tire Service Trucks, Truck-mounted Cranes, Truck-mounted Stellarc Welders
& Truck-mounted Compressed Air Systems ONLY**

Stellar Industries, Inc. (Stellar) warrants products designed and manufactured by Stellar to be free from defects in material and workmanship under proper use and maintenance. Products must be installed and operated in accordance with Stellar's written instructions and stated lifting capacities. The warranty period shall be Twelve (12) month warranty on all Stellar designed and fabricated parts, and Ninety (90) days repair labor.

The warranty period shall begin from the date recorded by Stellar as the in-service date. This date will be derived from the completed warranty registration card. In the event a warranty registration card is not received by Stellar, the factory ship date will be used. Stellar's obligation under this warranty is limited to, and the sole remedy for any such defect shall be, the repair and/or replacement (at Stellar's option) of the part and/or component in question. Stellar after-sales service personnel must be notified by telephone, fax, e-mail, or mail of any warranty-applicable damage within fourteen (14) days of its occurrence. If at all possible, Stellar will ship the replacement part within 24-hours of notification by the most economical, yet expedient, means possible. Expedited freight delivery will be at the expense of the owner.

Warranty claims must be submitted and shall be processed in accordance with Stellar's established warranty claim procedure. Stellar Service personnel must be contacted prior to any warranty claim. A return materials authorization (RMA) account number must be issued to the claiming party prior to the return of any warranty parts. Parts returned without prior authorization will not be recognized for warranty consideration. All damaged parts must be returned to Stellar freight prepaid; freight collect returns will be refused.

Warranty service will be performed by any Stellar new equipment distributor, or by any Stellar-recognized service center authorized to service the type of product involved, or at the Stellar factory. At the time of requesting warranty service, the owner must present evidence of date of delivery of the product. The owner shall be obligated to pay for any overtime labor requested of the servicing company by the owner, any field service call charges, and any towing and/or transportation charges associated with moving the equipment to the designated repair/service provider.

All obligations of Stellar and its authorized dealers and service providers shall be voided if someone other than an authorized Stellar dealer provides other than routine maintenance service without prior written approval from Stellar. In the case repair work is performed on the Stellar-manufactured product, original Stellar parts must be used to keep the warranty in force. The warranty may also be voided if the product is modified or altered in any way not approved, in writing, by Stellar engineering.

The owner/operator is responsible for furnishing proof of the date of original purchase of the Stellar product in question. Warranty registration is the ultimate responsibility of the owner and may be accomplished by the completion and return of the Stellar product registration card provided with the product. If the owner is unsure of registration, he is encouraged to contact Stellar at the address below to confirm registration of the product in question. This warranty covers only defective material and workmanship. It does not cover depreciation or damage caused by normal wear and tear, accident, mishap, untrained operators, or improper or unintended use. The owner has the obligation of performing routine care and maintenance duties as stated in Stellar's written instructions, recommendations, and specifications. Any damage resulting from owner/operator failure to perform such duties shall void the coverage of this warranty. The cost of labor and supplies associated with routine maintenance will be paid by the owner.

The only remedies the owner has in connection with the breach or performance of any warranty on the Stellar product specified are those set above. In no event will Stellar, the Stellar distributor/dealer, or any company affiliated with Stellar be liable for business interruptions, costs of delay, or for any special, indirect, incidental, or consequential costs or damages. Such costs may include, but are not limited to, loss of time, loss of revenue, loss of use, wages, salaries, commissions, lodging, meals, towing, hydraulic fluid, or any other incidental cost.

All products purchased by Stellar from outside vendors shall be covered by the warranty offered by that respective manufacturer only. Stellar does not participate in, or obligate itself to, any such warranty.

Hydraulic cylinders used in Stellar products are subject to the same warranty provisions stated above. Should a cylinder defect develop within the above stated warranty period, notify Stellar immediately. Stellar will ship, freight prepaid, by the most effective, expedient, means a new or re-manufactured cylinder of the same size and type. An authorization for return of the original part will be issued at the time the order is placed. The defective cylinder is to be returned to Stellar freight prepaid by the owner. Cylinders returned freight collect will be refused. Should the defective cylinder not be returned within 30 days of shipping the replacement cylinder, the owner is responsible to pay Stellar the full purchase price of the replacement part.

Stellar reserves the right to make changes in design or improvement upon its products without imposing upon itself the same upon its products theretofore manufactured.

This warranty will apply to all Stellar Tire Service Trucks, Truck-mounted Cranes, Truck-mounted Stellarc Welders & Truck-mounted Compressed Air Systems shipped from Stellar's factory after January 1, 1997. The warranty is for the use of the original owner only and is not transferable without prior written permission from Stellar.

THIS WARRANTY IS EXPRESSLY IN LIEU OF ANY OTHER WARRANTIES, EXPRESS OR IMPLIED, INCLUDING ANY WARRANTY OF MERCHANTABILITY OR FITNESS FOR A PARTICULAR PURPOSE. REMEDIES UNDER THIS WARRANTY ARE LIMITED TO THE PROVISION OF MATERIAL AND SERVICES, AS SPECIFIED HEREIN. STELLAR INDUSTRIES, INC. IS NOT RESPONSIBLE FOR INCIDENTAL OR CONSEQUENTIAL DAMAGES.

Stellar Industries, Inc. • 280 West Third Street • Garner, Iowa 50438 • U.S.A.

E-Mail • sales@stellar-industries.com

Telephone: 800/321-3741; 641/923-3741 • Fax: 641/923-2812; 641/923-2811

Revised 10/05/2000