



CRANE MODEL 3200

280 W. 3rd St., Box 169 • Garner, IA 50438 • Phone: 515-923-3741 • Fax: 515-923-2812

**TABLE OF CONTENTS
STELLAR CRANE 3200**

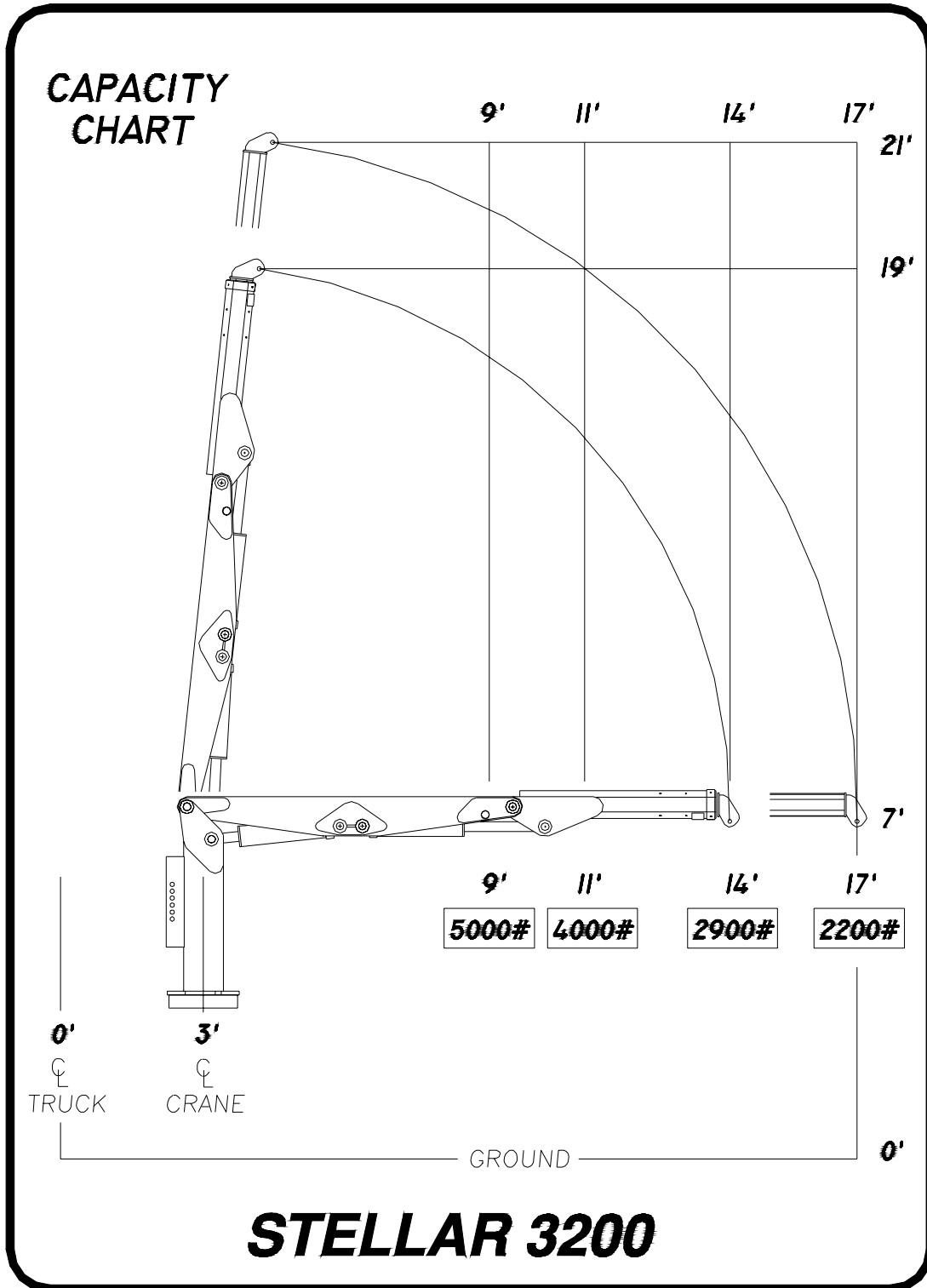
PAGE	DESCRIPTION
3.)	SPECIFICATION SHEET
4.)	CAPACITY CHART
5.)	CRANE OPERATION
6.)	CRANE PARTS DRAWING
7.)	CONTROL KIT
8.)	HYDRAULIC KIT
9.)	INSTALLATION KIT
10.)	DECAL KIT
11.)	WARRANTY

SPECIFICATION SHEET

Crane Rating	32,000 foot/pounds
Standard Boom Length	11 foot-from CL of Crane 14 foot-from CL of Truck

Boom Extension	Hydraulic 32 inches
Maximum Horizontal Reach	14 foot-from CL of Crane 17 foot-from CL of Truck
Maximum Vertical Lift (from truck frame)	18 foot
Inner Lift Cylinder	4 ½ inch bore with integral pilot operated counterbalance valves.
Outer Lift Cylinder	4 ½ inch bore with integral pilot operated counterbalance valves.
Extension Cylinder	2 ½ inch bore with integral pilot operated counterbalance valves.
Rotation	290 degree power (hourglass worm gear)
Lifting Capacities	5,000 pounds @ 9 foot 4,000 pounds @ 11 foot 2,900 pounds @ 14 foot 2,200 pounds @ 17 foot
Power Supply Required	PTO & Pump (4 gpm @ 2800 psi)
Controls	25 foot cord with hand held control for all functions. (2-speed control standard)
Stowed Height (above truck frame)	60 inches
Mounting Space Required	24 inches
Approximate Shipping Weight	1900 pounds

CAPACITY CHART



CRANE OPERATION

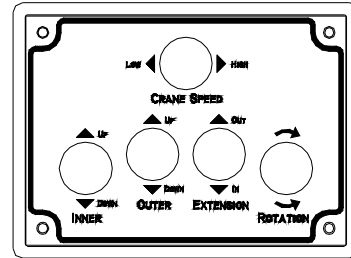
CRANE OPERATION

THIS CRANE IS CONTROLLED BY AN ELECTRONICALLY OPERATED VALVE BANK. THE CONTROLLER FOR THIS VALVE IS SHOWN TO THE SIDE.

THE FUNCTIONS THAT IT CONTROLS ARE AS FOLLOWS:

INNER BOOM UP & DOWN
 OUTER BOOM UP & DOWN
 EXTENSION BOOM IN & OUT
 ROTATION CW & CCW

TO RUN ANY HYDRAULIC FUNCTIONS THE PUSH BUTTON SWITCH (AS SHOWN TO THE SIDE) MUST FIRST BE ACTIVATED.

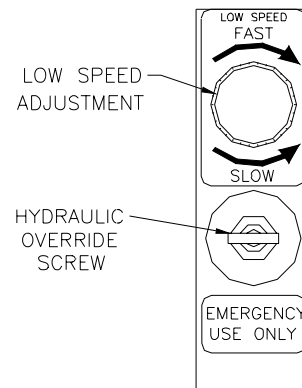


PUSH BUTTON SWITCH
 LOCATED OFF OF
 INDEX FINGER

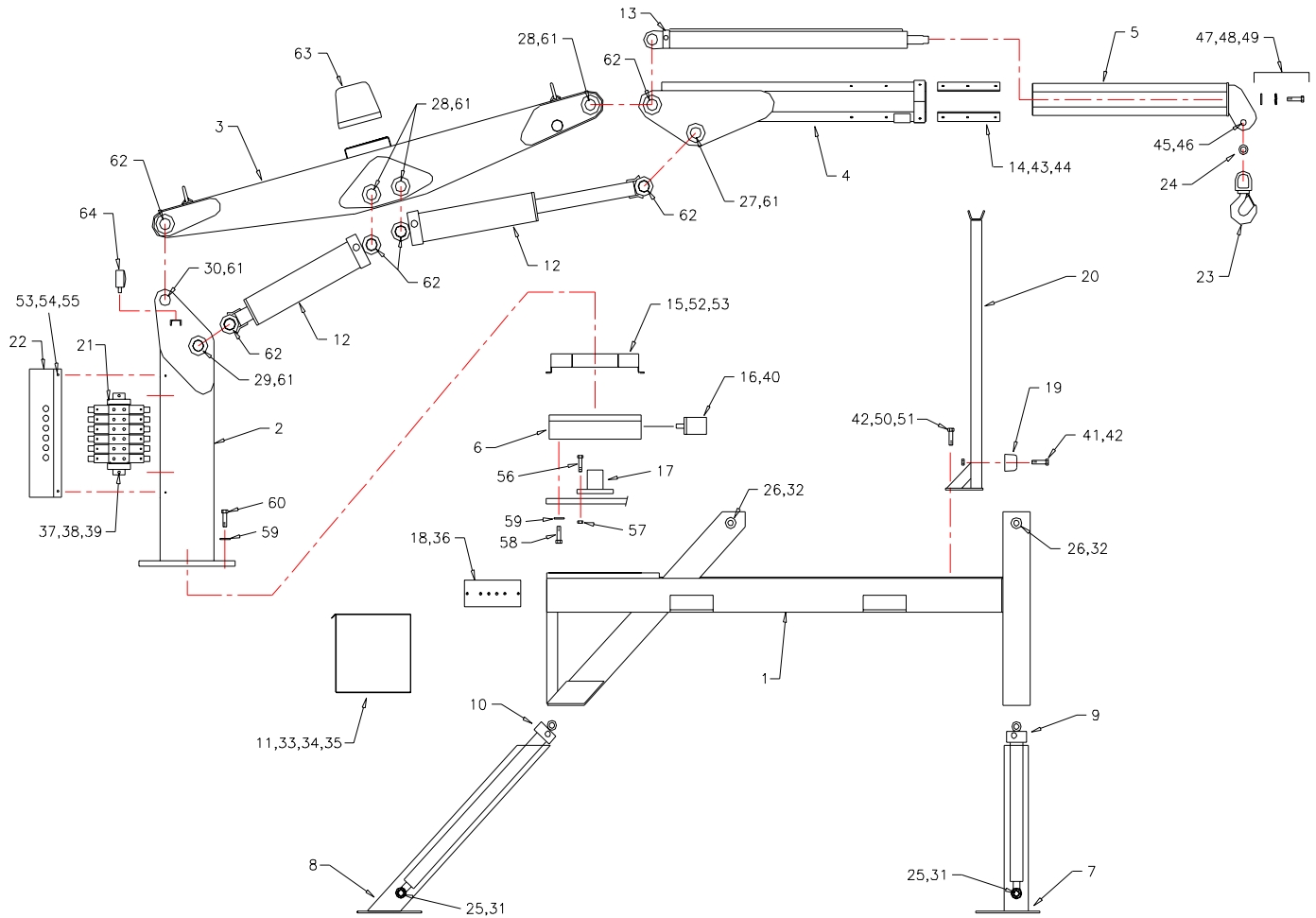
THIS CRANE ALSO HAS TWO WORKING SPEEDS. THE HIGH SPEED IS FIXED, AND IS THE QUICKEST THAT THE CRANE WILL OPERATE. THE LOW SPEED IS FULLY ADJUSTABLE, AND CAN BE ADJUSTED ON THE MANIFOLD LOCATED IN THE CRANE BOX. (AS SHOWN TO THE SIDE)

NOTE: IN THE EVENT THAT THE CRANE HYDRAULICS WILL NOT OPERATE WITH THE HANDLE, TURN THE OVERRIDE SCREW IN THE CRANE BOX.

THE CRANE CAN NOW BE OPERATED WITH THE MANUAL OVERRIDES ON THE VALVE BANK.

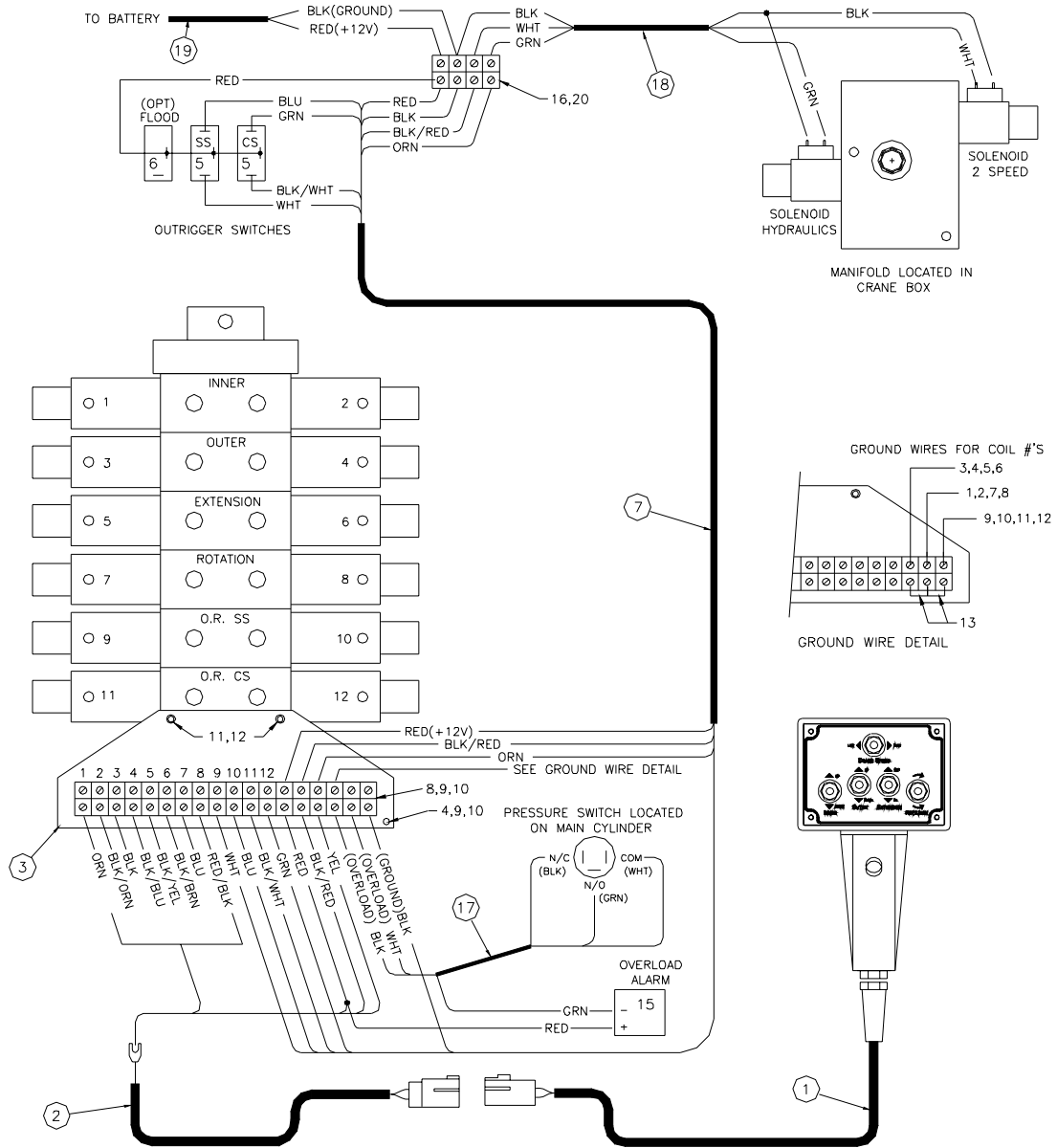


CRANE ASSEMBLY



ITBM	PART No.	DESCRIPTION	QTY	ITEM	PART No.	DESCRIPTION	QTY	ITEM	PART No.	DESCRIPTION	QTY
01	D0802	BASE, 3200 CRANE	1	23	3863	HOOK	1	46	4541	CAP SCR, 1.00-8 X 5.00 HH	1
02	D0745	MAST, 3200 CRANE	1	24	4485	BUSHING	1	48	C1050	NUT, 1.00-8 NYLOC	1
03	D0683	INNER BOOM, 3200 CRANE	1	25	D0977	PIN, 1.00 X 3.75	2	47	C4736	CAP SCR, .62-11 X 2.25 HH Z	1
04	D0624	OUTER BOOM, 3200 CRANE	1	26	3796	PIN, 1.00 X 6.50	2	48	C1038	WASHER, .62 FLAT	1
05	D0583	EXTENSION BOOM, 3200 CRANE	1	27	D0936	PIN, 2.00 X 7.62	1	49	C1045	WASHER, .62 LOCK	1
06	D0955	BEARING, SWING DRIVE	1	28	D0937	PIN, 2.00 X 10.75	3	50	0500	CAP SCR, .50-13 X 1.75 HH	4
07	3778	OUTRIGGER LEG, CS	1	29	D0938	PIN, 2.00 X 14.25	1	51	0352	WASHER, .50 FLAT	4
08	D0967	OUTRIGGER LEG, SS	1	30	D0966	PIN, 2.00 X 12.50	1	52	C0920	CAP SCR, .31-18 X .50	4
09	3783	CYLINDER, OUTRIGGER CS	1	31	3875	RETAINING RING, 1.00 INT	4	53	0343	WASHER, .31 FLAT	8
10	D0773	CYLINDER, OUTRIGGER SS	1	32	0110	RETAINING RING, 1.00 EXT	4	54	0522	WASHER, .31 LOCK	4
11	4020	COMPARTMENT ASM, CRANE BOX	1	33	C0923	CAP SCR, .31-18 X 1.25 HH	4	56	C0948	CAP SCR, .31-18 X .75 HH	4
12	D0771	CYLINDER, INNER & OUTER	2	34	C1047	NUT, .31-18 NYLOC	4	56	D1034	CAP SCR, .62-11 X 3.00 HHGR8	2
13	D0770	CYLINDER, EXTENSION	1	35	D0607	WASHER, .31 BONDED	8	57	C1049	NUT, .62-11 NYLOC	2
14	6252	WEAR PAD	4	36	D0613	SCREW, #14 X .75 TAPPING	2	58	D1312	CAP SCR, .62-11 X 3.50 HHGR8	24
15	D1728	GUARD, ROTATION DRNE	1	37	C0942	CAP SCR, .38-16 X 1.25 HH	2	59	C5902	WASHER, .62 CR8	42
16	D1453	MOTOR, HYD	1	38	C4776	NUT, .38-16 NYLOC	2	60	C1026	CAP SCR, .62-11 X 2.50 HHGR8	18
17	4074	ROTATION STOP	1	39	0346	WASHER, .38 FLAT	20	61	0108	RETAINING RING, 2.00 EXT	12
18	4082	SWITCH MTG PLATE	1	40	D1307	CAP SCR, .50-13 X 1.25 SH	2	62	0066	BUSHING, GF-3235-32	12
19	3945	RUBBER BUMPER	1	41	C0996	CAP SCR, .50-13 X 3.00 HH	2	63	C0877	BEACON LIGHT (OPTIONAL EQUIPMENT)	1
20	4045	SADDLE, 3200 CRANE	1	42	C1048	NUT, .50-13 NYLOC	6	64	2305	FLOOD LIGHT (OPTIONAL EQUIPMENT)	2
21	3855	VALVE BANK, 6 SECTION	1	43	9363	WEAR PAD	4				
22	3991	VALVEBANK COVER	1	44	9361	PLATE- WEAR PAD COVER	4				

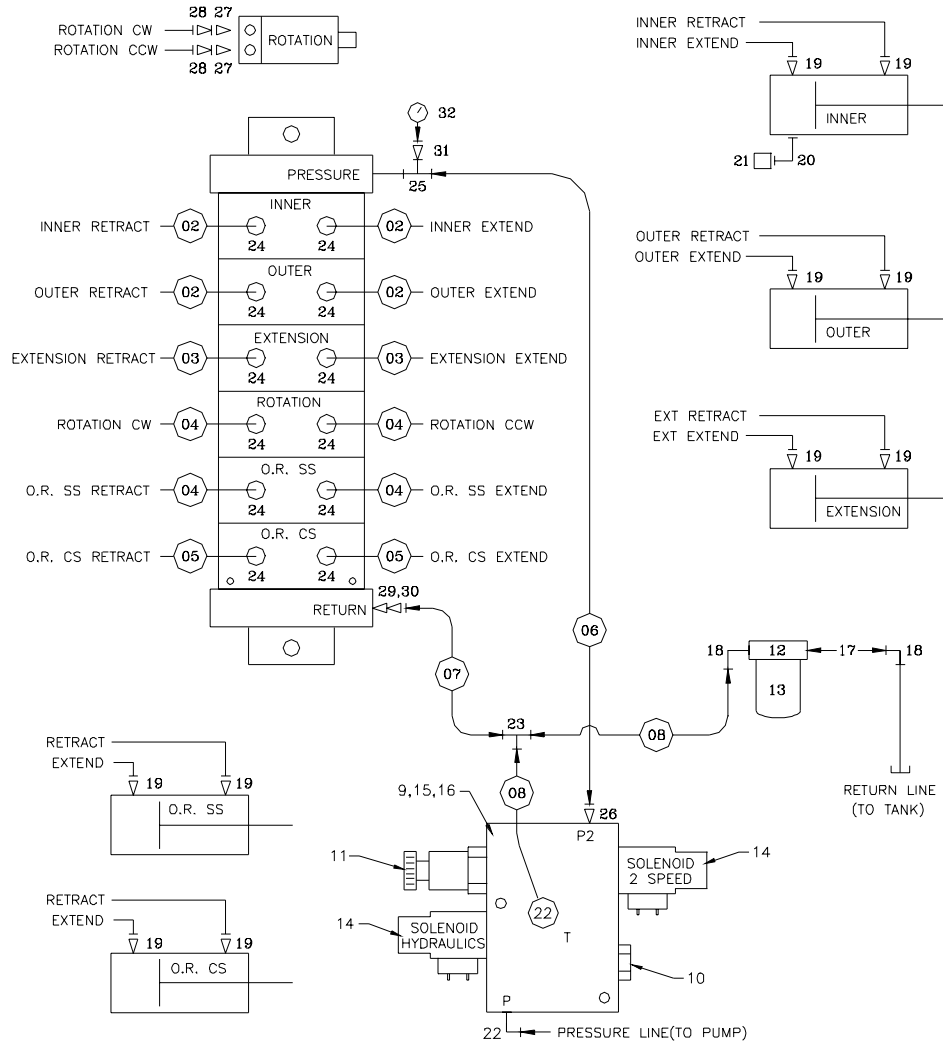
CONTROL KIT



10	D1487	NUT- #10-24	3
09	D1712	CAP SCR - #10-24 X .75 BH SS	3
08	3877	TERMINAL STRIP - 18	1
07	C3543	CABLE, 18-8 SOW (9ft)	1
06	C4815	SWITCH, ON-OFF	1
05	C4722	SWITCH, TOGGLE SPDT MOM	2
04	C0078	CLAMP, .38	1
03	4083	PLATE, TERMINAL STRIP	1
02	4517	PIGTAIL, 3200 CONTROL	1
01	4512	HANDLE ASM, CRANE	1
ITEM	PART No.	DESCRIPTION	QTY

20	4909	BRACKET, TERM STRIP	1
19	C6202	CABLE, DUPLEX 14-2 X 60.00" LONG	1
18	4571	CABLE, 16-3 x 36.00" LONG	1
17	4571	CABLE, 16-3 x 84.00" LONG	1
16	C4817	TERMINAL STRIP - 4	1
15	D0045	ALARM, CAPACITY ALERT	1
14	C5953	TERMINAL-SPADE 14/16 #10 STUD	27
13	C1190	TERMINAL, SADDLE	2
12	C2202	WASHER .25 LOCK	2
11	C0901	CAP SCR-.25-20 X .50	2
ITEM	PART No.	DESCRIPTION	QTY

HYDRAULIC KIT

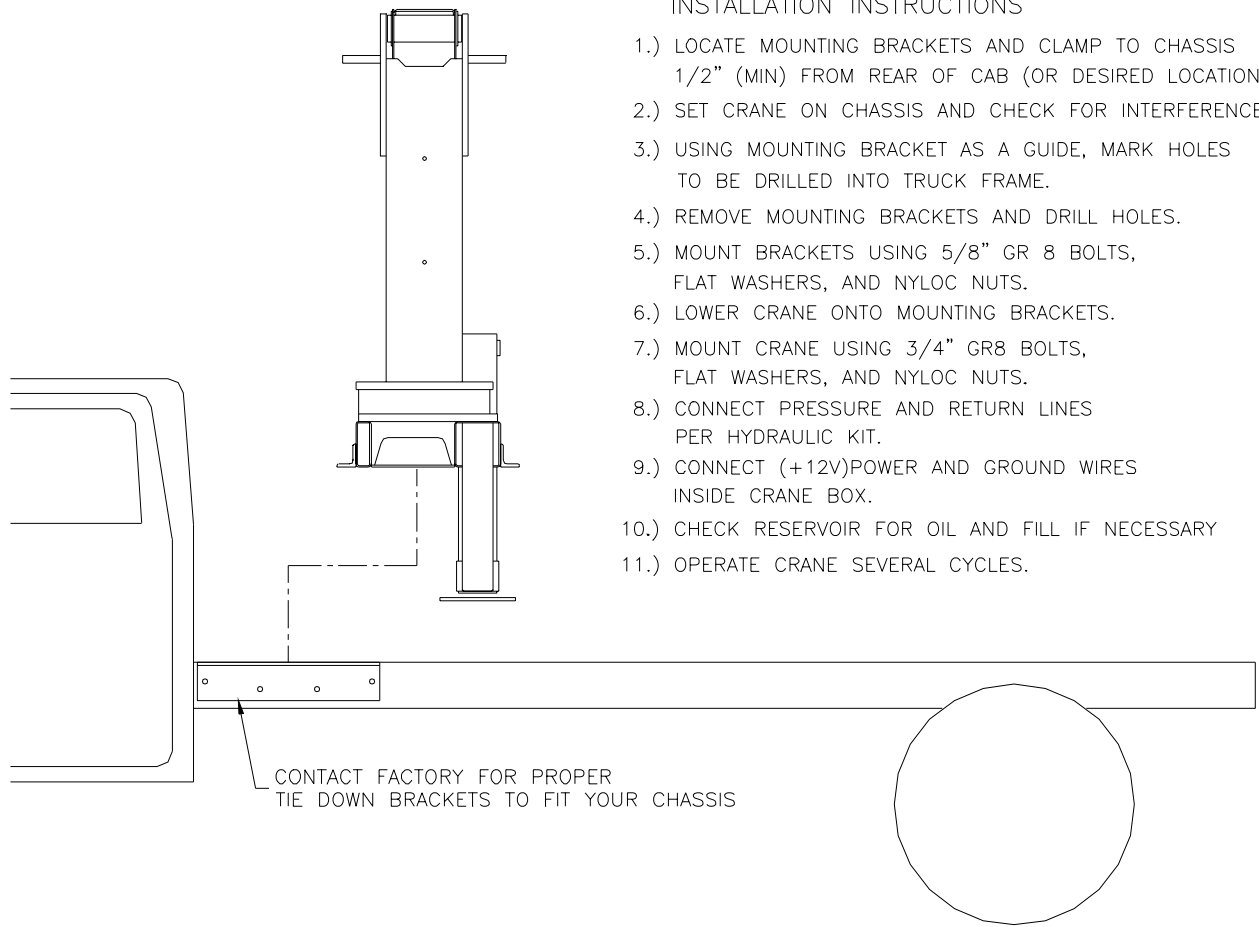


16	C0302	NUT-.25-20 NYLOC	2	32	6397	PRESSURE GAUGE	1
15	C0907	CAP SCR-.25-20 X 2.00 HH	2	31	6390	FTG, ADAPTER-REDUCER	1
14	C3280	VALVE, SOLENOID CP508-2-B-0-12DS	2	30	C2376	FTG, ADAPTER 8C6LO	1
13	C6227	FILTER	1	29	D1290	FTG, ADAPTER 8-6 F50LO	1
12	C6226	FILTER HEAD	1	28	C4922	FTG, ADAPTER 4-6 F50LO	2
11	4174	VALVE,FLOW CONTROL-ADJ .1-6	1	27	C1111	FTG, REDUCER 10-6 F50C5	2
10	4173	VALVE,FLOW CONTROL	1	26	C0279	FTG, ADAPTER 6F50LO	1
09	3909	MANIFOLD, 2 SPEED	1	25	6834	FTG, TEE MODIFIED C2343	1
08	4540	HOSE-HYD .50 X 32	2ref	24	C4935	FTG, ELBOW 4-6 C50LO	12
07	4539	HOSE-HYD .50 X 118	1ref	23	C2218	FTG, TEE 8JLO	1
06	4538	HOSE-HYD .38 X 96	1ref	22	C1556	FTG, ADAPTER 8C50LO	2
05	4537	HOSE-HYD .25 X 168	2ref	21	3862	PRESSURE SWITCH	1
04	4536	HOSE-HYD .25 X 153	4ref	20	3861	FTG, ELBOW 6815-6-6	1
03	4535	HOSE-HYD .25 X 116	2ref	19	D1291	FTG, ADAPTER 4F50LO	10
02	4534	HOSE-HYD .25 X 67	4ref	18	C2244	ELBOW, 90°	2
01	4520	HOSE KIT,3200 CRANE (incl:2-8)	1	17	C1054	NIPPLE, 0.75 X 6.00 BLACK PIPE	1
ITEM	PART No.	DESCRIPTION	QTY	ITEM	PART No.	DESCRIPTION	QTY

INSTALLATION KIT

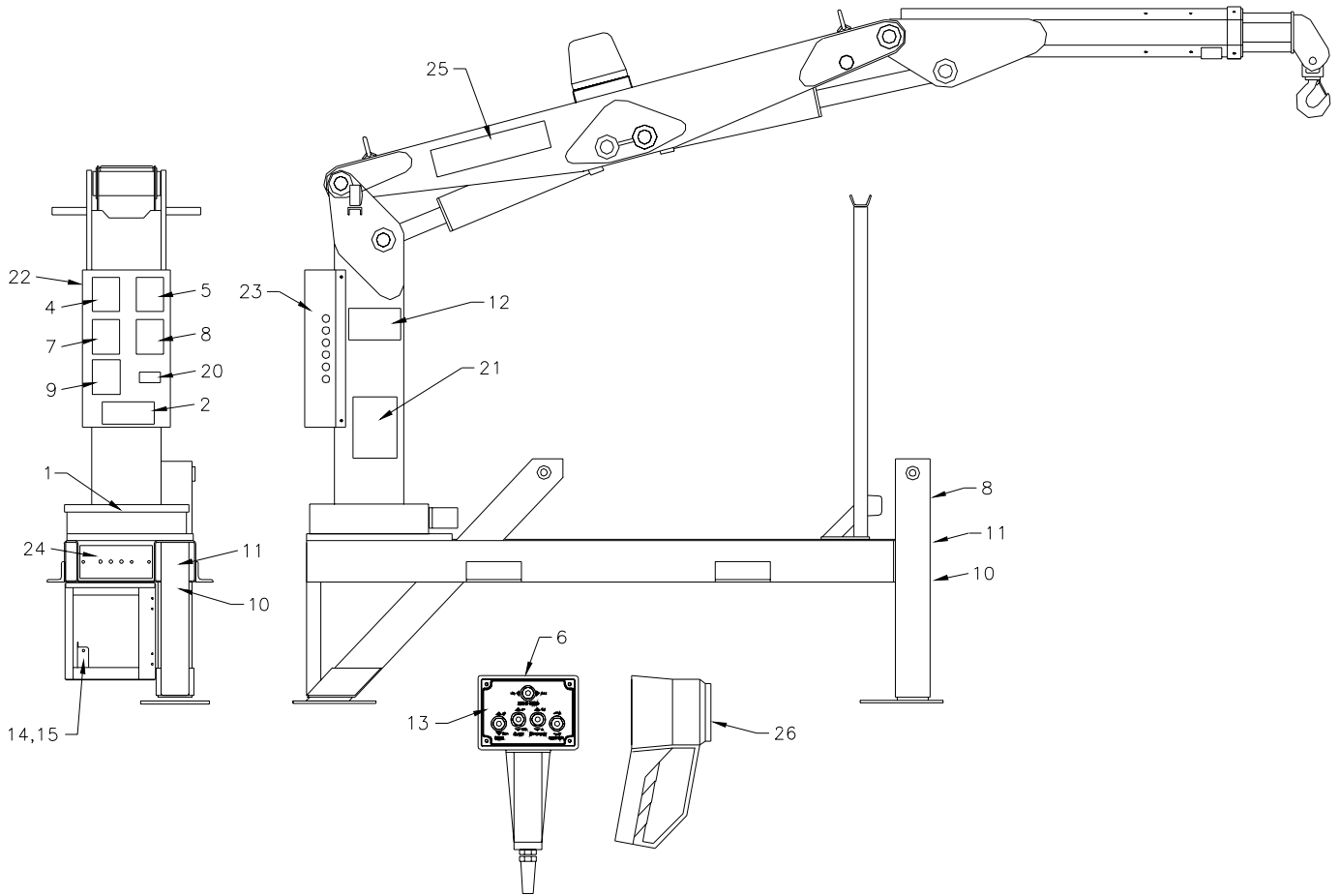
INSTALLATION INSTRUCTIONS

- 1.) LOCATE MOUNTING BRACKETS AND CLAMP TO CHASSIS 1/2" (MIN) FROM REAR OF CAB (OR DESIRED LOCATION).
- 2.) SET CRANE ON CHASSIS AND CHECK FOR INTERFERENCES.
- 3.) USING MOUNTING BRACKET AS A GUIDE, MARK HOLES TO BE DRILLED INTO TRUCK FRAME.
- 4.) REMOVE MOUNTING BRACKETS AND DRILL HOLES.
- 5.) MOUNT BRACKETS USING 5/8" GR 8 BOLTS, FLAT WASHERS, AND NYLOC NUTS.
- 6.) LOWER CRANE ONTO MOUNTING BRACKETS.
- 7.) MOUNT CRANE USING 3/4" GR8 BOLTS, FLAT WASHERS, AND NYLOC NUTS.
- 8.) CONNECT PRESSURE AND RETURN LINES PER HYDRAULIC KIT.
- 9.) CONNECT (+12V)POWER AND GROUND WIRES INSIDE CRANE BOX.
- 10.) CHECK RESERVOIR FOR OIL AND FILL IF NECESSARY
- 11.) OPERATE CRANE SEVERAL CYCLES.



06	C0538	NUT, 0.75-10 NYLOC	4
05	C6219	WASHER, 0.75 FLAT SAE	8
04	4543	CAP SCR, 0.75-10 X 2.00 HHGR8	4
03	2826	NUT, 0.63-11 NYLOC	8
02	C5902	WASHER, 0.63 FLAT SAE	16
01	C1025	CAP SCR, 0.63-11 X 2.00 HHGR8	8
ITEM	PART No.	DESCRIPTION	QTY

DECAL KIT



13	6513	DECAL-HANDLE(FACE PLATE)	1	26	6832	DECAL-MAGNET COVER	1
12	C1179	DECAL-ELECTROCUTION 4.5x7.5	2	25	4162	DECAL-IDENTIFICATION	2
11	C5918	DECAL-DANGER MOVING O.R.	2	24	4158	DECAL-OR PANEL	1
10	C4795	DECAL-DANGER O.R.	2	23	4159	DECAL VB CONTROL RS	1
09	4190	DECAL-DANGER	1	22	4160	DECAL-VB CONTROL LS	1
08	C4541	DECAL-DANGER STOWING	2	21	4161	DECAL-CAPACITY	2
07	4189	DECAL-DANGER	1	20	4214	DECAL-SERVICE	1
06	4186	DECAL-ELECTROCUTION 2x2.75	1	* 19	4305	DECAL-FLOOD LIGHT	1
05	C4544	DECAL-DANGER	1	* 18	C0568	DECAL-DIESEL FUEL ONLY	2
04	C4540	DECAL-DANGER	1	* 17	C5911	DECAL-STELLAR 2x4.5	3
* 03	C4545	DECAL-ELECTROCUTION 5x13	4	* 16	C5910	DECAL-STELLAR 4x9.5	1
02	4187	DECAL-ELECTROCUTION 3.25x7.5	1	15	4402	DECAL-EMERGENCY USE ONLY	1
01	4188	DECAL-ALIGNMENT	1	14	4306	DECAL-LOW SPEED	1
ITEM	PART No.	DESCRIPTION	QTY	ITEM	PART No.	DESCRIPTION	QTY

*THESE DECALS NOT SHOWN(USE WITH BODY PACKAGE)

Limited Warranty Statement

for Stellar Tire Service Trucks, Truck-mounted Cranes, & Truck-mounted Compressed Air Systems ONLY

Stellar Industries, Inc. (Stellar) warrants products designed and manufactured by Stellar to be free from defects in material and workmanship under proper use and maintenance. Products must be installed and operated in accordance with Stellar's written instructions and capacities. The warranty period shall cover the following:

**Twelve (12) month warranty on all Stellar designed and fabricated parts, and
Ninety (90) days repair labor**

The warranty period shall begin from the date recorded by Stellar as the in-service date. This date will be derived from the completed warranty registration card. In the event a warranty registration card is not received by Stellar, the factory ship date will be used. Stellar's obligation under this warranty is limited to, and the sole remedy for any such defect shall be, the repair and/or replacement (at Stellar's option) of the unaltered part and/or component in question. Stellar after-sales service personnel must be notified by telephone, fax, or letter of any warranty-applicable damage within fourteen (14) days of its occurrence. If at all possible, Stellar will ship the replacement part within 24-hours of notification by the most economical, yet expedient, means possible. Expedited freight delivery will be at the expense of the owner.

Warranty claims must be submitted and shall be processed in accordance with Stellar's established warranty claim procedure. Stellar Service personnel must be contacted prior to any warranty claim. A return materials authorization (RMA) account number must be issued to the claiming party prior to the return of any warranty parts. Parts returned without prior authorization will not be recognized for warranty consideration. All damaged parts must be returned to Stellar freight prepaid; freight collect returns will be refused.

Warranty service will be performed by any Stellar new equipment distributor, or by any Stellar-recognized service center authorized to service the type of product involved, or by the Stellar factory in the event of a direct sale. At the time of requesting warranty service, the owner must present evidence of date of delivery of the product. The owner shall be obligated to pay for any overtime labor requested of the servicing company by the owner, any field service call charges, and any towing and/or transportation charges associated with moving the equipment to the designated repair/service provider.

All obligations of Stellar and its authorized dealers and service providers shall be voided if someone other than an authorized Stellar dealer provides other than routine maintenance service without prior written approval from Stellar. In the case repair work is performed on a Stellar-manufactured product, original Stellar parts must be used to keep the warranty in force. The warranty may also be voided if the product is modified or altered in any way not approved, in writing, by Stellar.

The owner/operator is responsible for furnishing proof of the date of original purchase of the Stellar product in question.

Warranty registration is the ultimate responsibility of the owner and may be accomplished by the completion and return of the Stellar product registration card provided with the product. If the owner is not sure of registration, he is encouraged to contact Stellar at the address below to confirm registration of the product in question. This warranty covers only defective material and workmanship. It does not cover depreciation or damage caused by normal wear and tear, accident, mishap, untrained operators, or improper or unintended use. The owner has the obligation of performing routine care and maintenance duties as stated in Stellar's written instructions, recommendations, and specifications. Any damage resulting from owner/operator failure to perform such duties shall void the coverage of this warranty. The cost of labor and supplies associated with routine maintenance will be paid by the owner.

The only remedies the owner has in connection with the breach or performance of any warranty on the Stellar product specified are those set above. In no event will Stellar, the Stellar distributor/dealer, or any company affiliated with Stellar be liable for business interruptions, costs of delay, or for any special, indirect, incidental, or consequential costs or damages. Such costs may include, but are not limited to, loss of time, loss of revenue, loss of use, wages, salaries, commissions, lodging, meals, towing, hydraulic fluid, or any other incidental cost.

All products purchased by Stellar from outside vendors shall be covered by the warranty offered by that respective manufacturer only. Stellar does not participate in, or obligate itself to, any such warranty.

Stellar reserves the right to make changes in design or improvement upon its products without imposing upon itself the same upon its products theretofore manufactured.

This warranty will apply to all Stellar Tire Service Trucks, Truck-mounted Cranes, & Truck-mounted Compressed Air Systems shipped from Stellar's factory after January 1, 1997. The warranty is for the use of the original owner only and is not transferable without prior written permission from Stellar.

THIS WARRANTY IS EXPRESSLY IN LIEU OF ANY OTHER WARRANTIES, EXPRESS OR IMPLIED, INCLUDING ANY WARRANTY OF MERCHANTABILITY OR FITNESS FOR A PARTICULAR PURPOSE. REMEDIES UNDER THIS WARRANTY ARE LIMITED TO THE PROVISION OF MATERIAL AND SERVICES, AS SPECIFIED HEREIN. STELLAR INDUSTRIES, INC. IS NOT RESPONSIBLE FOR INCIDENTAL OR CONSEQUENTIAL DAMAGES.

**Stellar Industries, Inc. • 280 West Third Street • Garner, Iowa 50438
U.S.A. Telephone: 800/392-3015; 515/923-3741 • Fax: 515/923-2812; 515/923-2811**

revised 1/1/97